

# The Berea Alumnus

Fall 2001

**"Without bitterness or hatred. . ."**  
*Berea during World War II*



Dept. Hist & Pol. S  
Berea College  
Berea,  
Kentucky

Dear Louis,  
Forgive the familiarity  
to write you in my mind  
Nathan Anthony  
ATTAKA-APA130  
San Francisco Calif.  
Louis  
to Berea Col  
PASS BY  
NAVAL CENSOR  
PLEASE  
will be back in  
Dear Mr Smith,  
Perhaps  
idea that soon  
account of my  
entertained thoug  
how-w  
with the  
song th  
untry. In  
you  
to do  
myse  
felt  
ind  
ing the chance of the first  
Island to Taiwan. I am  
booklet and postcard  
greatful to you for the  
Berea. My brother Cowley  
of Taiwan. This Island is  
hundred and fifty miles North  
land and Southeast of China  
a prisoner of war by the Jap  
Carregador. We hope to  
Samoans will cooperate with us  
Mabel is trying to get  
few but have not had any  
to a year-months  
any more

As the *Berea Alumnus* was going to press, we were all shocked and saddened by the tragic events of September 11, 2001. The feature article on World War II's impact on the Berea community (p. 10), as well as former President Francis Hutchins' address on "War's Demands," (p. 38) were planned some months ago for publication in this issue. In light of recent national events, they are especially relevant in the uncertain days ahead.

On Wednesday, September 12, Berea President Larry D. Shinn shared his reflections on the tragic events of the previous day with the Berea College campus community. We thought you would want to read those reflections. As Dr. Shinn reminds us, Berea's commitment to "impartial love" can and should guide our response to these events. —Ed.

Dear Bereans,

As the tragic events and news are still being reported from New York City, Washington, D.C., and around the world, I want to reflect briefly on ways we can respond to these events.

The noon chapel service yesterday (Sept. 11) included the dedication of seventeen student chaplains. During this moving service, these young people were asked to serve others on campus with the premise of the two great commandments: (a) love God and (b) love your neighbor as yourself. I reminded those attending this service that this scriptural text helped shape John Fee's notion of "impartial love" that resulted in the early Berea utopian community and our community of today. That same vision of impartial love can help us fathom and respond to the current terrorist acts that are extraordinary in scope and precedence.

We can expect disbelief to turn to fear, anger, and calls for retaliation as the days wear on. Our President's speeches yesterday reflect this progression. We need at this moment to comfort each other and allow our tears of grief and disbelief to find expression. However, we must remind ourselves that too often anger turns into hate, and ultimately, even into violence. We must resist this tendency by tempering even righteous anger with compassion and restraint.

Some of you will remember a Holocaust survivor who spoke at Berea four or five years ago and was asked what we could do about violence against Jews or other targeted minorities. He responded that we cannot intervene in the Middle East or Northern Ireland when it is those who live there who must create a path of peace for themselves. Instead he suggested that we must act locally if world peace is ever to become a reality.

May we at Berea College use the events in New York City and Washington, D.C. to remind us that our community will achieve its lofty ideals only to the extent that our righteous anger is also tempered with compassion and restraint. It is my hope that our national leaders will seek justice and not simple vengeance. It is also my hope that we as a community may use this tragic national event and its complex causes as an opportunity for reflection and introspection. Let us promote "love over hate, human dignity and equality, and peace with justice." This is the challenging ideal to which we as Bereans aspire.

Sincerely yours,  
Larry D. Shinn, President



Photo by Mary Lynch, '02

Dr. Michael Rivage-Seul, professor of general studies and religion, leads discussion at the campus-wide Teach-In concerning the tragedies, sponsored by the Center for Excellence in Learning through Service (CELTS) and the Campus Christian Center. Faculty

with specific knowledge of issues such as U.S. foreign policy, Islam, current world affairs, etc. exchanged ideas with over 50 students, faculty, staff and community members.

Photo by Mary Lynch, '02



The United States flag on College Square flew at half-staff in honor of the victims.



Jason Mendez, Student Government Association vice president, and U.S. Army reservist, lights a candle in remembrance of the victims at a service sponsored by the student chaplains, the SGA, Campus Christian Center and the President's office.

Photo by Tonya Johnson, '02

# The Berea Alumnus

Volume 72, Number 2

Website [www.berea.edu](http://www.berea.edu)

Dr. William A Laramée

*Vice President,*

*Alumni and College Relations*

Jackie Collier Ballinger, '80

*Executive Director, Alumni Relations*

Timothy W Jordan, '76

*Director, Public Relations*

Ann Mary Quarandillo

*Editor*

Shelley Boone Rhodus, '85

*Class Notes Editor*

Linda L. Kuhlmann

*Graphic Designer*

## ALUMNI ASSOCIATION STAFF

Jackie Collier Ballinger, '80

*Executive Director*

Mary A Labus, '78

*Coordinator of*

*Alumni Information Services*

Shelley Boone Rhodus, '85

*Coordinator of Events Planning and Student Relations*

Norma Proctor Kennedy, Cx '80

*Office Manager*

Renee Deaton, Cx '90

*Secretary*

## ALUMNI EXECUTIVE COUNCIL

### Officers:

*President:* Dr. Willie Parker, '86

*President-Elect:* Ernest Graham, '49

*Past President:* Rebecca Hollen Lewis, Cx '70

Dr. William A Laramée

Jackie Collier Ballinger, '80

### Council Members:

Mary A Labus, '78

Shelley Boone Rhodus, '85

Dr. Larry D. Shinn, *Berea College President*

Vicki E. Allums, '79

Pansy Waycaster Blackburn, '58

Kristin Conley Clark, '92

Juanita Noland Goldiron, '47

Dr. J. Mark Estep, '77

Willie Hill, III, '90

Melissa A Jennings, '95

Dr. Steele Mattingly, '50

Tana Brown McGraw, '81

Tyler Thompson, '82

Tracy Thompson, '80

Iverson Louis Warriner, '66

Judy Garner White, '67

## ALUMNI TRUSTEES

Vance Edward Blade, '82

Jerry J. Cox, '65

Jewrette Y. Johnson, '77

Dr. William H. Johnstone, '74

The Berea Alumnus (ISSN0005-8874) is published quarterly for Berea College alumni and friends by the Berea College Public Relations Department, CPO 2142, Berea, Ky, 40404.

POSTMASTER: Send address corrections to the Berea College Alumni Association, CPO 2203, Berea, Ky, 40404. Phone 859.985.3104.

The Alumni Association Honor Roll of Donors, which has appeared in the Fall issue of the *Alumnus*, will now appear in the annual President's Report, along with the other pertinent financial information about the College. The Report is mailed to all alums.

## 8 ■ Understanding our global community

*International programs help faculty, students explore their world*

## 10 "Without bitterness or hatred. . ."

*Bereans during World War II*



Page 10

## 15 ■ Making community connections

*Berea College's nursing program*

## 18 Of Mice and Mayo

*Dr. Chella David's special mice help doctors fight disease*



Page 18

## 21 A real plus

*Berea education invaluable for two-physician family*

## 22 Wellness for a lifetime:

*Encouraging Bereans to think healthy*



Page 24

## 24 The importance of mentors

*Dr. Willie Parker helps California stay healthy*



Page 25

## 25 ■ Berea's best and brightest

*Alums help a new generation explore medicine*

## 28 Summer Reunion

## 4 News Around Campus

## 36 Passages

## 7 News About Sports

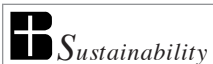
## 38 A Closer Look

*War's Demands*

## 32 About Berea People

*Note to our readers:* The mission of Berea College is carried out through activities guided by Berea's Great Commitments. Since its founding, Berea College has provided a place for all students – male and female, black and white – to "be and become." Berea's strategic plan, *Being and Becoming: Berea College in the Twenty-First Century*, identifies specific initiatives which the College is implementing to continue its tradition of learning, labor and service. While all *Alumnus* articles relate to Berea's mission, specific articles about the strategic plan initiatives are indicated with the ■ symbol.

*Clarification:* In the Spring 2001 *Alumnus*, the action photo of Greg Laws on p. 34 should have been credited to Kim Alsip, '03.



## A house of straw?

There is a new straw bale shed at the Berea College Greenhouses that was designed by students and constructed at a July 28 workshop organized by students. But this straw house is in no danger of being blown down by a big bad wolf.

Straw bale construction is an alternative building technique that is gaining acceptance nationwide. The exterior walls of these buildings are comprised of bales of straw, and coated with various types of plasters, many of which are made from local soil. Straw bale walls provide high insulation values, good structural support, moderate cost, low toxicity and easy installation. Straw bale construction also takes an agricultural product that is in some areas a waste disposal problem and turns it into a valuable resource and income source for farmers.

During the workshop, sponsored by Berea College's Sustainability and Environmental Studies (SENS) program, participants helped build a straw bale shed and apply earthen plaster to the structure. Berea College students Kelly Cutchin, '03, Jennie Koch, '02, and Kristin McCombs, '03, who have been learning about straw bale construction this summer, conducted the workshop. The shed will be used by the College gardens.



*Over 40 students, faculty, staff and community members participated in the hands-on straw bale workshop. In the foreground is a sample bale covered with earthen plaster.*



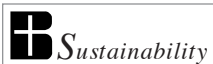
*(Left) Buddy Williams, architect with Van der Ryn architects and a straw bale building expert, demonstrates how to divide a straw bale to fit the dimensions of the shed. (Right) Participants use human energy to make plaster.*



*Photos by Terry Nelson*

Berea College has adopted ecological design—the application of ecological principles to building and landscape design—in its effort to become a sustainable campus. As part of this process, students in the SENS program are experimenting with alternative building techniques and materials that could be used in campus construction projects. “A lot of the SENS program focuses on improving lifestyles in Appalachia,” says agriculture and SENS major Chloe Tewksbury, '01, who participated in the workshop. “The solution has to be low input, low cost. We have straw and we have trees. You can build a house and support the local economy. When you support the local economy, you build community.”

Information on other natural building techniques was also available, including a demonstration on how to make “papercrete” building blocks from old newspapers. The SENS program solar demonstration cart, solar ovens and information on producing electricity from sunlight were also a part of the workshop.



## New College cars save gas, energy

In keeping with its goal to reduce the use of fossil fuels as part of becoming a more sustainable campus, the College recently purchased two Toyota Prius compact sedans, hybrid gasoline- and electric-powered automobiles which have just become available in the United States. Their hybrid engines use a combination of electricity and gasoline for power and are more environmentally friendly and fuel efficient than traditional combustion vehicles. The United States Environmental Protection Agency estimates the Prius is capable of 52 miles per gallon in the city and 45 mpg on the highway, and significantly reduces emissions of carbon monoxide and other pollutants.



*Photo by Tinsley Carter, '04*

## Berea named “hidden treasure”

The *Kaplan/Newsweek College Catalog 2002* has listed Berea as a “hidden treasure” as well as a top school in the “schools that support diversity” category. The annual publication is based on market research among high school guidance counselors across the country. Excerpts from the survey also appear in the *Kaplan/Newsweek How to Get into College* magazine.

## New Staff at Berea



*Attorney  
Judge Wilson*

Attorney Judge Wilson, '78, has joined Berea College as on campus General Counsel. Wilson served as the College's attorney while at Wyatt, Tarrant & Combs, LLP in Lexington, Ky., where he became a partner in 1993. Prior to that, he served as Vice President and General Counsel for the Fasig-Tipton Company, Inc. He holds his B.A. in economics, and earned his J.D. from the University of Kentucky College of Law in 1981.



*Dr. Miriam  
David*

Dr. Miriam David has joined the College Health Service as a physician and director of Health Services. She graduated magna cum laude from the University of Michigan-Ann Arbor with a B.S.N., and received her M.S. in public health from the University of Missouri-Columbia. She earned her M.D. with high distinction at the University of Kentucky, and completed her residency in family practice and preventive medicine. Before coming to Berea, she served for 10 years as a family practitioner in Lexington, Ky. She is the Medical Director of Mountain Maternal Health in Berea, and serves on several community boards.



*Dr. Patricia  
Kaurouma*

Dr. Patricia Kaurouma is the new director of residence life services and Collegium team leader. She holds a B.A. from Colorado State University and her M.A. and Ed.D. from the University of Colorado. She also earned a Masters of Divinity from Yale University where she served as a minister. She has taught in education and Black and African studies at the University of Colorado, SUNY, CUNY, Vassar, and Cornell, and has served in student affairs leadership positions at Earlham, Vassar, MIT, and the University of Pennsylvania. Dr. Kaurouma is a frequent contributor of papers and presentations on topics such as Black history, gender studies, and minority student success and retention.



## Dontje new ecological design chair



*Dr. James  
Dontje*

Dr. James Dontje has joined the College as assistant professor of Sustainability and Environmental Studies (SENS), holding the Compton Chair in Ecological Design. His main focus will be to teach the concepts of ecological design and involve students in applying these concepts to the development of a sustainable campus and region.

Dontje holds his B.A. in physics from Luther College and his M.S. in agricultural engineering, with a minor in agricultural education, and Ph.D. in biosystems and agricultural engineering, with a minor in sustainable agricultural systems, from the University of Minnesota.

Dontje served for six years with the Mennonite Central Committee (MCC), first in Burkina Faso in western Africa, and most recently in Indonesia. His work with native peoples in two very different environments gives him a unique understanding of the effects of human actions on the environment, and the issues confronting sustainability locally, regionally, and globally. He will assist communities in the Appalachian region in developing strategies for sustainable development, in addition to his role as a primary advisor for the College's construction and renovation projects. Dr. Dontje's master's research in wastewater treatment aquaculture systems will directly support two projects being planned at Berea—a "Living Machine" to treat the wastewater from the College's ecovillage, and an aquaculture/hydroponics facility being planned by the agriculture and natural resources department. He will also teach in both the SENS department and in general studies.

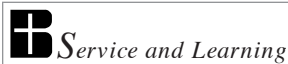
## Fee descendant visits campus

A little rain couldn't dampen the enthusiasm of Mac Pirkle, great-grand nephew of Berea College founder John G. Fee, when he visited Berea in June. The theatre producer, director and writer from Nashville, Tenn., who has founded several theatre companies in the south, explored campus with tour guides Clara Garcia Rendon, '03 (right, with Pirkle) and Esther Greene, '02, who happens to be a theatre major. With his background in theatre and film, he

*Photo by Ann Mary Quarandillo*



was especially interested in the McGaw Theatre and enjoyed seeing the historical performance photo display from the College's theatre department. He was also treated to a crafts demonstration including woodcraft, broomcraft and wrought iron work.



## High school students gain college experience

From June 9th to July 25th Berea College hosted 113 low income, high potential high school students in the Upward Bound and Carter G. Woodson Math and Science Institute enrichment programs. Sixty-six students in Upward Bound, a federally funded TRIO program, and 47 in the Woodson Institute got a six-week taste of college life.

According to Berea TRIO director Mary S. McLaughlin, '69, students in these programs tend to go on to college at a much higher rate than others in the region. "Our goal is to place 75 percent in college," she says. "We exceed that goal every year."

The Woodson Institute focuses on recruiting African American students, and concentrates heavily on science and mathematics, while Upward Bound provides a liberal arts experience for Appalachian students. Upward Bound participants studied a wide variety of subjects, including foreign language, weight training, poetry, Malaysian culture, and much more.

Students got a feel of what it is like to be a college student by living in Berea College residence halls and eating in the dining hall. Besides the required academic work, students were also involved in a number of activities designed to help them explore different fields and prepare for college enrollment.

## Berea art exhibits

Due to construction and renovation of art department facilities scheduled during 2001-2002, the art department will not have special exhibitions in the Doris Ulmann Galleries. From October through May 2002, visitors can see exhibitions from the permanent collection. Gallery hours are M-Th, 8 a.m.-9 p.m.; Fri., 8 a.m.-5 p.m. and Sunday, 1-5 p.m. Galleries are closed Saturdays and during College holidays and vacation periods. For additional information, call Gallery director John Hua Zhang at 859.985.3530 or visit the art department website at [www.berea.edu/ART/home.html](http://www.berea.edu/ART/home.html).

## Show your Pride on your Plate

The Association of Independent Kentucky Colleges and Universities (AIKCU) is pleased to announce an opportunity to show your school spirit and support Berea's general scholarship fund through the new Independent Higher Education series of Kentucky license plates. The series features a license plate for each of Kentucky's 19 non-profit independent colleges and universities. Plates featuring Berea College's name and logo can be ordered now and are renewable annually when you register your vehicle. The license plate costs just \$10 per year in addition to regular registration fees—\$10 that will go into the general scholarship fund at Berea College.

To produce the first shipment of plates, the Kentucky Department of Transportation must receive a total of 900 applications from the state's 19 independent colleges and universities. A one-time application fee of \$25 is required with each order. When the plate is picked up at the County Clerk's office, the regular registration fee of \$15, plus the \$10 to benefit scholarships at Berea, will be due. The \$25 application fee is refundable in the unlikely event that 900 applications are not received.

Show your support for Berea College and send in your application today! For additional information about this program, visit [www.aikcu.org](http://www.aikcu.org).



### Application for Kentucky Independent Higher Education License Plate

Name \_\_\_\_\_ Social Security No. \_\_\_\_\_  
 Address \_\_\_\_\_  
 City \_\_\_\_\_ County \_\_\_\_\_ Zip \_\_\_\_\_  
 School Choice \_\_\_\_\_ **BEREA COLLEGE**

Return completed application form with \$25 to your County Clerk or mail to:

Kentucky Department of Transportation  
 Division of Motor Vehicle Licensing  
 Special License Section  
 P.O. Box 2014  
 Frankfort, KY 40602

*Checks should be made payable to: Treasurer, Commonwealth of Kentucky.*

## Public Relations moves to new home

Berea College's Public Relations office has moved to the historic Bond House at 213 Chestnut Street, across from Berea City Hall. Public Relations distributes news about the College through news releases, campus tours, brochures and information packets, while also coordinating the College web site, video production, and photography, and producing *The Berea Alumnus*. The tour center, which offers walking tours of the College, can still be found in the lobby of the Boone Tavern Hotel. Public Relations can be reached at CPO 2142, Berea, KY 40404, and by phone at 859.985.3018.



Photo by Zachary Pence, '03

## Berea College Arts and Entertainment Calendar Fall 2001

### Berea College Convocations

All events will take place in Phelps Stokes Chapel, admission is free unless otherwise noted. For more information contact John Crowden at 859.985.3171.

Th., Oct. 18	Mervyn Love Peace in Northern Ireland	3 p.m.
Th., Oct. 25	Founder's Day with featured speaker Benjamin Hooks	3 p.m.
Fri.-Sun., Oct. 26-27	Celebration of Traditional Music Evening Concerts Admission Charge: \$7-adults, \$3.50- ages 10-17.	8 p.m.
Th., Nov. 1	College-Wide Symposium with featured speaker Paul Loeb	1:15- 4p.m.
Wed., Nov. 7	Edwin Meese	8 p.m.
Th., Nov. 15	Khac Chi Ensemble Vietnamese traditional instrumentalists	8 p.m.
Th., Nov. 29	Baldemar Velasquez, Farm Labor Organizing Committee, and the Aquila Negra Band	3 p.m. 8 p.m.
Th., Dec. 6	The Western Wind a cappella vocal group— holiday program of music from many cultures.	8 p.m.
Th., Jan. 10	Chatham Baroque early music ensemble— concert titled "Españoleta" features Spanish percussion and harp.	8 p.m.

### Berea College Music Department Schedule

All events in Gray Auditorium except where noted. For additional information, contact the Music Department at 859.985.3463

Fri., Nov. 2	General Student Recital	8p.m.
Sun., Nov. 11	Concert Choir Fall Concert, <i>Union Church</i>	3 p.m.
Tues., Nov. 13	Wind Ensemble Fall Concert	8 p.m.
Friday, Nov. 16	Jazz Ensemble <i>Berea Dining Services</i>	5 p.m.
Sat., Nov. 17	Black Music Ensemble Homecoming Concert, <i>Phelps Stokes Chapel</i>	1:30p.m.
Sun., Dec. 2	Music Dept. Christmas Concert, <i>Union Church</i>	7:30p.m.

### Berea College Theatre Laboratory Season

Tickets for general admission are \$5. For more information contact Dr. Albert DeGiacomo, at 859.985.3326 or [www.berea.edu](http://www.berea.edu)

Nov. 9-10; 14-17	<i>Oresteia</i> , by Aeschylus McGaw Theatre	8 p.m.
---------------------	---	--------

### Berea College Dance Events

Admission is free unless otherwise noted. For additional information contact Susan Spalding, 859.985.3142

Th., Nov. 8	Berea Dances! Performances by six College dance groups, <i>Old Seabury Gym</i>	8 p.m.
-------------	---	--------

### Events Sponsored by the Black Cultural Center

For more information, call 859.985.3148.

Sat., Dec. 8	Kwanzaa Celebration The Commons, Woods- Penniman Bldg.	6 p.m.
Th., Jan. 21	Martin Luther King Jr. Activities, with featured speaker Dr. Michael E. Dyson.	11 a.m.- 9 p.m.

## Wierwille camp a success

National Hall of Fame Coach Roland Wierwille hosted the 27th annual Wierwille basketball camp at Berea College's Seabury Center June 19-22. Well over 100 male and female athletes ages 5-15 gained new skills, refined existing ones, and learned fitness techniques to help them become better players. Students came from all over central Kentucky, as well as some children of camp alums who rearranged their vacations so their kids could attend.

Many of the students' coaches help lead the day camp, which stresses fundamentals of the game. Alumni help as well, as do young athletes from surrounding communities who have attended the camp. Several Berea College student-athletes assisted with the camp, including Andrea "Andi" Amburgey, '03 (below, with Coach Wierwille and camper Bianca Pennington of Berea) who plays basketball and softball for the Berea Lady Mountaineers. "I really enjoyed working with the kids, and I'm definitely working the camp next year," says Amburgey. "Not only were they learning, but they were having fun learning. It was awesome!"

For more information about next year's camp, contact Coach Wierwille's office at 859.985.3423.



Photo by Tinsley Carter, '04

## Come support the Mountaineers!

### 2001-02 Men's Basketball

11/9-10	Berea Pepsi Classic Tournament	H
11/17	Spalding University (HOMECOMING)	H
11/20	Transylvania University	A
11/24-25	Hanover College Invitational	A
11/30	Crown College	at Asbury
12/1	LaGrange College	H
12/7-8	Franklin College Invitational	A
12/28-29	Centre College Invitational	A
1/1-2	Treasure Island Classic	Daytona Beach, Fla.
1/5	Mid-Continent College	A
1/9	St. Louis Pharmacy	H
1/12	Ohio Southern University	H
1/15	Asbury College	H
1/19	Indiana University Southeast	H
1/22	Montreat College	H
1/26	Bethel College	A
1/30	Spalding University	A
2/2	Bethel College	A
2/4	Transylvania University	H
2/9	Indiana University Southeast	A
2/10	St. Louis Pharmacy	A
2/14	Asbury College	A
2/16	Mid-Continent College	H
2/21&23	Regional Playoffs	TBA

### 2001-02 Women's Basketball

11/1	Alice Lloyd College	A
11/6	University of Virginia-Wise	A
11/9-10	King College Tournament	A
11/13	Lindsey Wilson College	A
11/17	Alice Lloyd College (HOMECOMING)	H
11/23	Knoxville College	A
11/24	Risk University	A
11/29	Wilberforce University	A
12/1	Transylvania University	A
12/4	Union College	H
12/7	King College	H
12/14	Virginia Intermont	H
1/1-2	Spring Hill Tournament	A
1/5	Indiana University Southeast	A
1/11	Midway College	H
1/15	Asbury College	A
1/19	Knoxville College	H
1/22	Indiana University Southeast	H
1/26	Bethel College	A
1/29	Spalding University	A
1/31	Asbury College	H
2/5	Midway College	A
2/12	Wilberforce University	H
2/14	Bethel College	H
2/21&23	Regional Playoffs	TBA

### 2001-02 Swimming

11/9-10	Sewanee Invitational	A
11/17	Warren Wilson College	H
11/30	Transylvania Invitational	A
&12/1		
12/7	Asbury College	A
1/26	Appalachian Conference Meet Asbury College	
2/9	LaGrange College (GA)	A
2/16	Warren Wilson College (NC)	A

Home meets with Centre and Cumberland Colleges, and away meet with Mac Murray College still to be scheduled.

# UNDERSTANDING OUR GLOBAL

## *International programs help faculty and students*

by Zachary C. Pence, '03

Two international learning experiences this summer allowed students and faculty to step outside the normal boundaries of the classroom, and experience other cultures firsthand. A faculty seminar and tour of China and a student course which visited Holocaust sites in Eastern Europe both stemmed from Berea's commitment to international education that prepares students to live and work in an increasingly interdependent global society, outlined in the College's strategic plan *Being and Becoming: Berea College in the 21st Century*. "I want our students to learn how to live and work responsibly in such a complex world," says Berea College President Larry Shinn, who traveled with the China group. "We want to develop faculty who, regardless of their disciplines, have the capacity to teach students about other perspectives."

### SEEING IT FOR THEMSELVES

#### *Students experience the horror of the Holocaust*

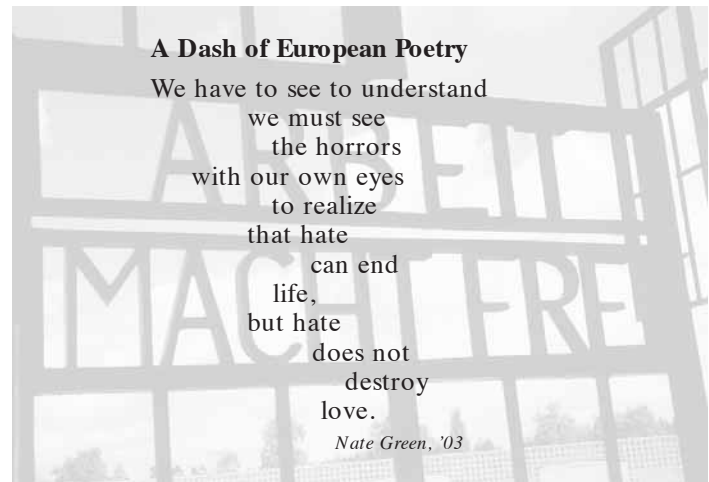
In June, a group of 19 Berea College students, along with several students from other institutions, toured various Holocaust sites in an attempt to enhance their understanding of the causes, course, and consequences of one of the darkest points in European history. The journey took place after nine days of intensive background study and preparation, and included sites in Germany, the Czech Republic, Austria, and Poland. During the course of the 17-day trip the students explored a number of concentration camps and European cities that were key sites in the destruction of Jewish life and culture.

"The experience is very difficult to explain. You have to see it for yourself," says Heather Abbott, '02, after visiting Auschwitz, the largest of the Nazi concentration camps, where nearly 1.5 million Jews were executed. "I had to force myself to go into some of those rooms. To sit and dwell on it is too much."

Steve Gowler, director of Hutchins Library Special Collections, who co-taught the class along with Dr. Alfred Perkins, professor of history, thinks one of the chief difficulties with teaching a course as emotionally draining as this is separating one's feelings from the coursework.

"It's difficult walking the fine line between intellect and emotion," he recalls.

Gowler and Perkins believe that study-travel courses, are beneficial to both the student and professor. "It was a



very gratifying teaching experience," says Perkins. "The subject matter is significant and interesting enough for other faculty members to utilize for future courses."

Students were also required to read large amounts of literature on the subject and write about what they had learned. During the tour they kept a reflective journal to record their thoughts and emotional reactions to what they were seeing.

One of the goals of the course was to increase the students' ability to cope with new situations and learn to view issues, such as the Holocaust, with a fresh perspective. Gowler and Perkins witnessed a new maturity in their students. "These young people were willing to experience things they were not familiar with," says Perkins. "I was delighted with their personal growth."



*The Holocaust tour group inside the front gate of Sachsenhausen camp, built in 1936 in Oranienburg, 35 kilometers north of Berlin. Prisoners from 40 nations were sent to Sachsenhausen during its almost 12 years of existence. The camp was liberated by a unit of the 47th Army of the Soviet Union on April 22, 1945.*

Photo courtesy of Steve Gowler

# COMMUNITY

*explore their world*

## MODERNIZATION VS. TRADITION

*Seminar in China helps faculty bring issues home to students*

In an attempt to understand how countries deal with the issues of modernization, 17 faculty members, led by Dr. Robert W. Foster, assistant professor of history, and Dr. Jill Bouma, assistant professor of sociology, went on a 25-day tour of China this summer. The participants explored a large number of cities and popular tourist attractions, between lectures with Chinese educators and experts.

"Our goal was to get those who went on the trip to understand the conflict between modernization and tradition," says Foster. Modernization and globalization have had a significant impact on Chinese culture. The larger cities are marked throughout with American icons, such as McDonald's and Starbucks. "Despite the U.S. influence," he says, "China has held onto her traditions." Since the loosening of Communist control, China has begun to revive the old ways, and this past is beginning to mesh with the modern. "Restaurants, like McDonald's for instance, tailor their menus to meet the tastes of the Chinese customer," Foster continues.

Those who participated also pondered whether or not modernization meant westernization. "The American influence was somewhat of a surprise," says Verlaine McDonald, assistant professor of English and theatre. "Many get the idea that China is a backward culture without any modern conveniences. It's not."

Foster believes visiting China gave faculty a chance to challenge stereotypes. "You really can't generalize about such a large country," says Stephanie Browner, associate professor of English and theatre, who teaches several courses dealing directly with diversity and race issues. "When most people see an Asian person, they tend to think, 'There's an Asian.' You just stick them into one big group. But when you are the minority in another land, you think more about the individual, not just the group they belong to."

Besides simply viewing the various aspects of Chinese culture, the faculty participated in group discussions with several Chinese experts and leaders. The topics varied greatly, from Shanghai's high-tech industry to Yunnan minorities.

The group is encouraged to find ways to incorporate what they have learned into future courses. "Dr. Bouma and I will work with these faculty members to figure out



practical ways to incorporate these issues in the classroom," Foster says. "I think all faculty members can greatly enhance their perceptions and teaching styles by physically exploring other cultures."

The trip was made possible by generous grants given by the Knight Foundation and the Horace W. Goldsmith Foundation in support of Berea's learning goals.



Photo by Dr. Lee Roecker

(Above) An American influence in Shanghai.

(Below) Dr. Rob Foster participates in an incense lighting ceremony in a Tibetan Buddhist temple near Lijiang in China's Yunnan Province.

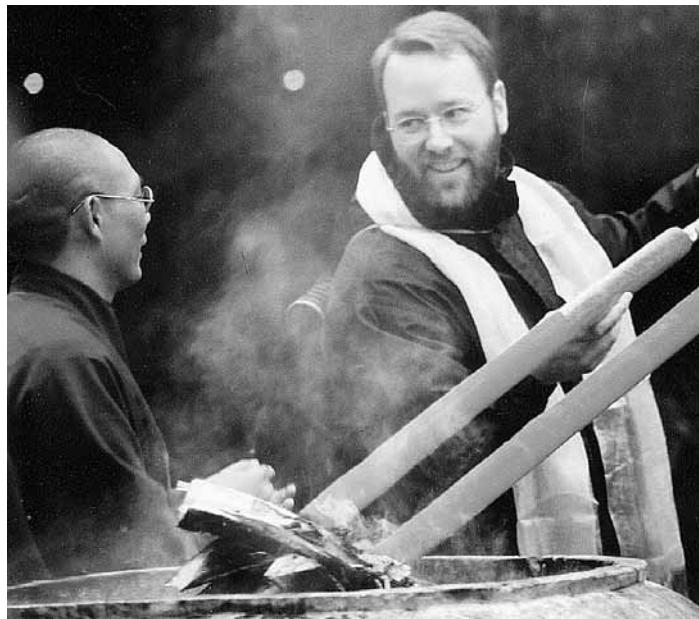


Photo by Dr. Lee Roecker

# "WITHOUT BITTERNESS OR *Bereans during World War*

Between 1941 and 1944, 844 students, men and women, withdrew from Berea to enter the armed services, as did over 50 faculty and staff members. More than 200 students, faculty and staff on campus participated in peace movements aimed at ending the war. The Navy V-12 program brought 782 young sailors to study at Berea. Seven Nisei (Japanese-American) students left relocation camps for the College. A German student was detained under suspicion he was a spy. And at least 58 Bereans died in service to their country.

As the 60th anniversary of the United States' entry into WW II approaches in December 2001, it is important to look back at Berea during wartime. The Great Commitments, particularly "to assert the kinship of all people," "to create a democratic community," and "to emphasize the motive of service to others" resonated with Bereans in different ways. Some felt that any kind of war was wrong, and fighting was against their conscience. Others knew they needed to serve their country as soldiers and sailors.

But through the war, the overriding commitment "God has made of one blood all peoples of the earth" shaped the College's culture and environment. Dr. Louis Smith, who served as dean of Berea's upper division from 1927-47 and academic dean of the College from 1947-69, corresponded with many Berea servicemen and women during WWII. The letters they wrote tell amazing stories of Bereans at Corregidor, on the beaches at Normandy, struggling through training, and being detained as prisoners of war.

The letters paint a picture of bravery, conviction, and overall, a respect and fondness for Berea College, which supported each one's choice to follow his or her conscience.

April 28, 1944  
Nichols General Hospital,  
Ft. Thomas, Ky.

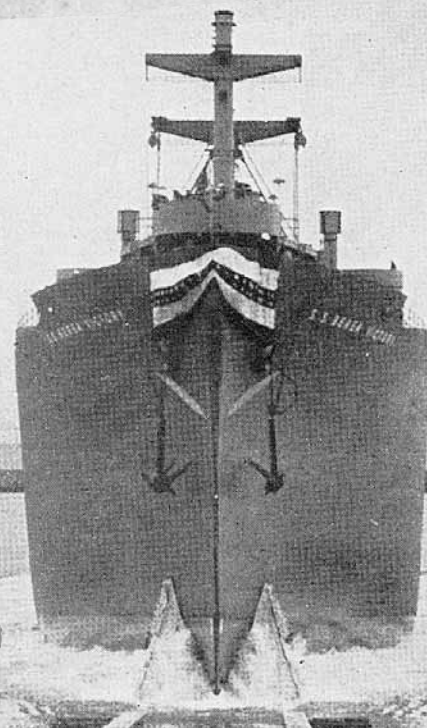
It has often occurred to me just how much change there is in one's attitude toward an individual after he acquires the title soldier, Marine, or sailor. I often feel it myself - the loss of a number of soldiers doesn't seem as bad as if a group of people are killed in a train wreck or some fire disaster. When one does stop to think though, those fellows are just as close, and to them life is just as dear.

Hughes Spurlock, '47, served in Africa, and spent July 4, 1943 in a military hospital for a compound leg fracture. He went on to work for the U.S. Department of Agriculture.

July 13, 1944  
Normandy, France

It's no secret that life has not been too sweet with me since our getting on the beach D-day. In the first place the Germans don't care too much about our being here, in fact, if the welcome they gave us on D-day is indicative of their true feelings, far all they care we could go back anytime. We came here to stay and I imagine Hitler is yet to decide what attitude he is to take.

Kermin Fleming was a political science major who went into the Navy as an ensign in WWII. He fought through the war, but was killed in an automobile accident near Shelbyville, Ky. after his return.



All letters and photos are courtesy of  
Hutchins Library Special Collections

# HATRED. . . "

## II

August 26, 1944  
Normandy, France

We were approaching the beach in the early morning light. The naval shelling had not commenced. . . Then off to the left a flash followed quickly by a sharp report about 150 yds. off our stern. The next one landing 10 ft. off the stern, with perfect range still, dispelled any doubt that he was quickly correcting his deflection. We expected the next one squarely on the deck. Fortunately at that crucial moment a large cruiser with several shells streaked out towards the battery on the shore and what a comforting sound those explosions were! The battery never fired again. Naval gunfire is very accurate, terrifying and destructive. I at once became an ardent admirer of naval gunnery.

Quentin Brickey, '43, survived D-Day, and moved to Columbus, Ohio. His stories from France vividly describe not only his combat experiences, but the strength and courage of the civilians he met. The following story is from the same letter as above.

One morning as I was walking on the beach I met an elderly French lady. . . We talked for some time, then she remarked that to celebrate this American friendship, she would bring me some flowers sometime that afternoon. As we shook hands and parted, I never expected to see her again. In an hour or two she, to my disbelief, appeared again carrying the flowers wrapped in a cloth. The flowers were fragrant but somewhat dusty, for she had picked them from around the pile of debris which had been her home before intense naval bombardment had demolished it on D-Day June 6. I cherish not as much the perishable flowers alone, but the spirit in which they were given.

May 26, 1945  
In the Pacific

I can't look at any book on the subject of American politics without thinking of those hot days (they seemed hot then, sometimes, but I've been in rather warmer weather since) when we all sat back and relaxed in those stiff chairs and listened to your (Louis Smith's) opinions and attempted to learn something. We occasionally voiced our own wet-behind-the-ears, but sometimes, I think, canny criticisms. I enjoyed those classes a great deal and wish they could have continued longer.

Nathan Anthony, Cx'44, was a member of the first V-12 group to arrive at Berea, and served in the Pacific from 1942-46. A career journalist, he was metropolitan editor for the *New York Times* from 1962 to 1984.



In 1943, Berea College was invited by the U.S. Navy to cooperate in its training program. The first group of 300 men of the United States Naval Reserve arrived on July 7, 1943, under the command of Lt. Comm. Homer Dunathan and executive officer Lt. Comm. John Kessler. Unfortunately, few letters sent from V-12 men to the College remain, but several reunions held at Berea, the most recent during summer 2000, have allowed many of the men to find one another, and Berea, again. Pictured above, a Navy V-12 formation at Berea in 1943.

September 19, 1942  
Santa Ana Army Air Base,  
Santa Ana, Calif.

Am here in training as a Bombardier.  
Receive my wings in January - then  
overseas - If I get back - I'll be  
back to finish off that degree I so  
poorly started.

Warren Gay lost his life when his bomber was shot  
down in combat over the English Channel.

March 4, 1945  
in Belgium

Even with all the ruggedness and sacrificed  
that have gone into it, I've had a very  
fortunate and fascinating experience since  
arriving overseas. . . It afforded (ed) me a  
chance to meet the very best of writers who  
are covering the war. Up in Normandy, one  
of my most enjoyable weeks was spent with  
Paul Gallico of Esquire and Cosmopolitan. . .  
In the battle of St. Lo I was with Dudley  
Harmon of U.P. Ernie Pyle; Hanson Ballou.  
Then across Brittany and in the Breast  
campaign with Lewis Mumford of NY Trib,  
Erica Mann of Liberty, . . . and Edward  
Johnson of the Times. He had a barn shot  
down on us there at Breast by Nazi 88's,  
and three of the writers were wounded. I  
came into Belgium 3 days after the battle of  
the Bulge started and remained here for 45  
days, where the weather was below zero  
for the whole month of January and  
snow was waist deep. It's the worst  
spell we've had since landing on the  
continent, but it brought out the true  
metal (sic) of the GI fighting spirit.  
It was gallant indeed.

Ralph Hammond, Cx '42, was a war correspondent  
in Europe, earning five battle stars for his reporting.  
He served as Alabama governor James "Big Jim"  
Folsom's press secretary and chief of staff, and  
publicity director for the state. An accomplished poet,  
he was Alabama's seventh Poet Laureate from 1992-95.

December 10, 1944  
Somewhere in New Guinea

AS for myself, I still attempt  
to fight without bitterness or hatred.

Lewis W. Combest, '43 spent two years in the  
Pacific. He became a lawyer and a Kentucky state  
legislator before moving to Ohio.

January 27, 1943  
Media, Pa.

Our thoughts have been very often with people  
in Berea this year, as we realized that the life  
of all colleges is threatened by the draft of the  
very young. We would like so much to be able to  
visit the campus and feel out for ourselves the  
mind of people about what adjustments are  
to be made. We have hugged to our hearts  
consistently the assurance that Pres. Francis  
Glitchins gave at one Homecoming that there  
would never be drilling and P.O.T.C. on the  
Berea campus. We expect to see the loss of many  
things as we have known them before the war  
is over, but we are praying to be spared the  
knowledge that Berea has lost her individual  
and separate power by the installation of the  
military.

Ken and Annabel Burnham, '40, lived in a  
"Brudercoop" in Media, Penn. during the war.  
Ken, a conscientious objector, took alternative serv-  
ice in the Civilian Public Service (C.P.S.), an organi-  
zation of work camps for men who did not believe  
in fighting or supporting war. He became a profes-  
sor of sociology at Temple University.

Edward R. Brann, '42 came to Berea College as a  
refugee from Hitlerism in his native Germany.  
When the war began, he came under suspicion as a  
German spy. The FBI came and searched his room,  
and eventually, due to complaints about the  
"German agent" on campus, Brann was taken into  
custody as an undesirable alien and sent to a deten-  
tion camp near Tullahoma, Tenn. His letters were  
severely censored.

October 29, 1942  
Camp Forrest, Tenn.

I imagine that you are as busy or, if possible,  
still busier than usual. (I) Am living together  
with a Dr. of laws, a doctor of engineering,  
and a seaman. It is becoming winter here  
and a few nights ago it was cold enough to  
freeze one of our water pipes. The symbols  
"term papers" and "mountain day" are non-  
existent here, but we try to indulge in  
forensic activities which bring about a  
certain amount of amusement.

Brann finished his degree, and became a consumer  
advocate in Wisconsin. He has established several  
awards for deserving Berea students.

In December, 1943, the Berea Civilian Defense Council (C.D.C.) passed a resolution against allowing Japanese-American students to relocate at the College. Professor E.T. Parks, whose nephew and brother were both serving in the U.S. armed forces, responded:

*The Berea Citizen*  
December, 1943

The rights of American citizenship are precious, not something to be lost merely because of the particular color of the skin or slant of the eyes. Prison camps were never meant for American citizens not convicted (not even charged) of disloyalty to their country. Disloyal persons (aliens and citizens alike) must be restrained during war time, but the action ought to be on individual, not racial bases. . . My hope is that we shall be able to assure our returning service men that we have perceived these essentials of the Democracy that they were defending.

Several Japanese-American students attended Berea College as a result of internment or "relocation" during World War II. On November 15, 1943, students Marjorie Ota, Frances Ota, Frank Seto, '49, Sally Shiminaka, '47, and Nobuyuki Yokogawa, '49 related their experiences in the relocation centers.

*The Wallpaper*  
November 22, 1943

Spending money is obtained through labor in the camp at wages comparable to ours in the Berea system. Education is handicapped by the lack of equipment for physical sciences. Sally posed quite simply the psychological problem of being housed in such narrow limits, the breaking up of the family unit, due to abnormal dining and living conditions, and the stagnation that would naturally follow such confinement. Frank told of the steps necessary to leaving camp to come to college. Questionnaires are filled out, the FBI investigates, and applications are made to colleges. Many students are not accepted.

Frank Seto, '49, received his Ph.D. in biology, and returned to Berea as a professor in 1960. Mary Kariya Takagaki, Cx '44, served as secretary of the junior class in 1943, and moved to Los Angeles, Calif. Nobuyuki Yokogawa, '49, was drafted into the U.S. Army and worked as a military translator in Japan at the end of the war. He went on to become a prominent physicist.



(Left) Nora Lou Thomson Treece (center in uniform), October 1944. (Right) Elizabeth Thomson serving in Caserta, Italy, 1944-45.

Men were not the only ones who joined the armed services. Nora Lou Thomson Treece, '44, wrote this essay to explain the hardships of war to other women who were considering joining the Army.

*Undated*

The Army routine is a stiff one, no one should tell you otherwise. . . remember that in spite of all the fun, hard work, and excitement, there will be difficulties. You will shed many a bitter tear, and curse the day you ever entered. . . but after that bitter moment has passed, you hold your head a little higher because of the pain you have gone through. The fellows that come back from overseas are proud even though they bear the marks of hard and torturous living. They carry their heads high. . . So, when this is all over, are the women who have worn and lived in uniform going to look."

Nora Lou and her sister Elizabeth Thomson served in Europe as part of the Women's Army Corps (WAC) during WWII.

January 28, 1944  
Camp Bronson, Great Lakes, Ill.  
I could see myself back in Berea, as a civilian, going to the Board Hall and to and from my classes just as you wrote in your letter. I always wish I was back there, but when I start thinking of what's to be done, I change my mind, not because I want to, but because my conscience forces me to. But it won't be long until I and many others will be back in the groove again at the college. I am very anxiously awaiting that day to come.

Calvin Baird, '49 returned to finish his degree at Berea and became a business representative in Tennessee.

The Fellowship of Reconciliation (F.O.R.), founded in Cambridge, England in 1914, opposed war and violence in international relations and promoted alternative means of reducing tension among nations and peoples. A chapter, organized in Berea in 1936, worked with conscientious objectors during World War II, supported civil rights, and protested U.S. policies during the Cuban Missile Crisis and the Vietnam war. The Youth Committee Against War (Y.C.A.W.) was a more radical group formed in 1937. The Berea Chapter was the catalyst for several peace protests on campus.



Bereans were active in the cause of peace, holding several protests against war and the appropriations of funds to pay for it. On January 19, 1938, over 200 students, faculty and staff held a silent protest against an increase in the Naval Appropriations Bill. One hundred twenty-seven students (above) participated in the national Student Peace Strike on April 20, 1939.

December 29, 1942  
Waldport, Oregon

It is always good to be made aware that what we are here in C.P.S. for is also the deep concern of many people in the outside who are serving the cause of reconciliation in their own way. We have our 'man behind' too. And it is well that we be reminded that even as churches and peace groups show us kindness and support, we are their representatives. When inconveniences or injustices tend to irritate us to personal protests and demands for our rights, our consciousness that this stand had far greater than mere personal implications and responsibilities will help us to go another mile or stand a little firmer.

Harold Hackett, Jr., Cx '41, spent the war in the Civilian Public Service.

September 27, 1941  
Fort Mills, the Philippines

Fort Mills is on what is called Corregidor Island. It is only nineteen miles around. We guard all incoming vessels or camouflage the planes with explosives. We have guns all the way from sixteen inches down here. When one of those guns is fired, the whole island shakes. I will tell you (more) in the next letter.

Cowley B. Lewis

July 17, 1943  
Hawaiian Islands

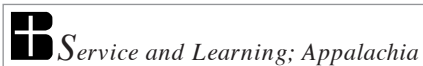
My brother Cowley is now on the island of Taiwan. . . Cowley was taken as a prisoner of war by the Japanese during the fall of Corregidor. If I learn any more news of Cowley I will let you know.  
Edward C. "Calfee" Lewis

Cowley and Calfee Lewis attended Berea's Foundation School, and went into military service from there. Calfee returned to Berea following the war. Cowley was taken prisoner when Corregidor fell to the Japanese on May 6, 1942. He lived out the remainder of the war in a prison camp, where he kept himself alive by eating food he was supposed to give to the pigs. He returned home, but passed away from tuberculosis a few years after his return, most likely as a result of his experience.

Undated  
Berea, Ky.

Peace study and peace action will be increasingly important, and while our resources for action may be increasingly curbed, there will be amazing opportunities and glaring needs for sincere and honest study of the problems that arise, and for earnest individual effort to live the convictions we have that we must work for a peaceful world, now.

Margaret Steinorth Reuter, '42, served as co-chair of the Youth Committee Against War. She went on to become an editor in Illinois.



# MAKING COMMUNITY CONNECTIONS

## *Berea College's Nursing Program*

By Donna Morgan, '89

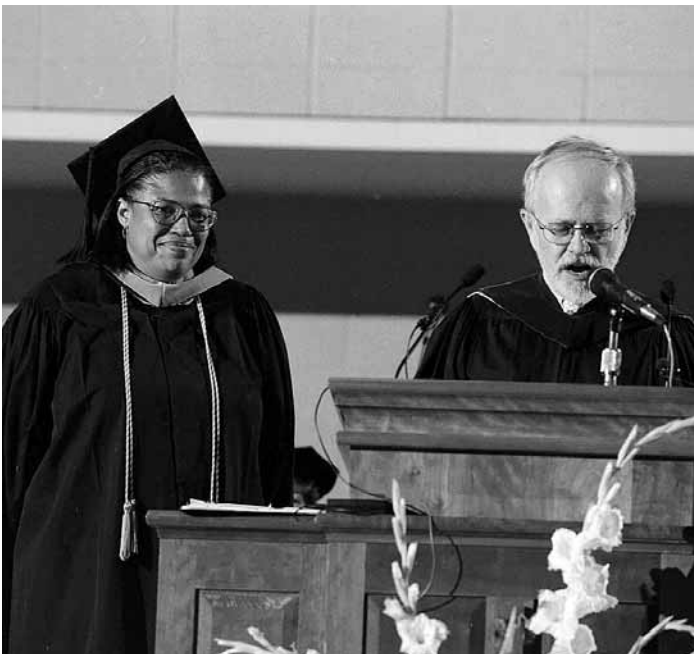


Photo by David Stephenson

*Brenda Hosley, M.S.N., '81, a member of the nursing faculty since 1990, was awarded Berea's Elizabeth Perry Miles Award for Community Service at Commencement 2001 for her work in community health initiatives.*

In the counties surrounding Berea College, families are enjoying healthier lifestyles. Elderly people are eating better and getting more exercise. Teachers have adopted better strategies for working with special needs students. School children have learned about good nutrition and the need for physical activity. Parents have realized the importance of immunizing their children. Meanwhile, Berea College nursing students have gained real-world experience and established relationships that are unavailable in the classroom. Berea's nursing department helped create these opportunities through its approach to the student clinical experience.

Assistant Professor Brenda Hosley, M.S.N., '81 describes the department's curriculum as focused on community-based strategies for health, built on the College's commitment to serving the Appalachian region and providing a continuous learning environment for students and community members. The program has moved beyond a hospital-based clinical model to a partnership that includes community agencies and families and that introduces students to the concepts of holistic community health.

The shift from a hospital-based to a community-based model resulted from observations of how patients were

## HEALTH IS HER BUSINESS



*Ann Duncan Peterson*

Ann Duncan Peterson, '65, has spent her professional life improving the health and well-being of the citizens of Tennessee. Starting out in Chattanooga as a public health nurse on the front lines of disease prevention, Duncan is

now deputy commissioner for the Tennessee Department of Health.

Responsible for day-to-day decisions in the Department of Health, and chief administrator for policy, planning and assessment within the agency, Duncan is also in charge of special projects for the Commissioner's office. She headed a project on community-based child health prevention initiatives which became Tennessee Governor Don Sundquist's plan for improving child health in the state. Other projects include the recent "Healthy People 2010," an initiative which sets public health goals for the state of Tennessee, and a current state-wide project focusing on nurse education.

"Educating nurses for the 21st century requires adapting and responding to changes in society," says Duncan. "We need to be preparing nurses for a much more diverse culture and be recruiting from more diverse populations. We also should focus more on environmental factors affecting health."

A member of the second class of students in Berea's baccalaureate nursing program, Duncan discovered her senior year that she wanted to go into public health when she took the on-site course in public health nursing, living and working for an entire semester in Clay County.

"I didn't know much about public health nursing until then," she recalls. "In my clinical experiences at Berea Hospital, observing sick children and people who came in with different illnesses, I often said to myself 'This could have been prevented.' When I took the public health course, I found out that public health professionals do help prevent some of this. It just made so much sense."

Duncan, who also holds a masters degree in public health nursing from the University of Minnesota, has enjoyed her career because it remains personally rewarding. Perley F. Ayer, former director of the Council of the Southern Mountains who also taught at Berea, helped her develop the philosophy toward her work which continues to inspire her efforts.

"When I look back at the experiences I had at Berea, I think it prepared me well for nursing and also for community service," she says. "One of Perley Ayer's 'laws' was 'society can advance only as fast as the very weakest among us can keep pace.' The idea that we have a responsibility to our society to help strengthen those groups—I think that's what we're doing in public health."

being released earlier from hospital care. Faculty realized that much nursing takes place in the home or in other out-of-hospital settings. The department also noted the need for proactive, preventative care to encourage holistically healthy communities. Hosley notes that the "new" clinical model is actually a return to tradition for the nursing department.

**The entire community benefits from Berea's clinical program, from the partner agencies that enjoy the energy and enthusiasm of Berea students to the families who receive services through the program.**

Berea College has been educating nurses since 1899, although the bachelor of science program was not officially established until 1960. In the early years of the bachelor of science program, students spent a two- to three-month period living in a community, serving the health needs of the residents (See story on Ann Duncan Petersen at left). Today, the service component exists just as strongly in the program. The program currently graduates an average of 16-20 nurses per year with a background focused on holistic community health.

The entire community benefits from Berea's clinical program, from the partner agencies that enjoy the energy and enthusiasm of Berea students to the families who receive services through the program. "We sometimes deal with families or individuals who normally might fall through the cracks of the health care system," Hosley comments.

In the classroom, freshman nursing students are introduced to the basic concepts of addressing residents' needs through a community-wide approach. Hosley notes the importance of creating trust by having people identify their own needs rather than having the department tell the community what its needs are. During their sophomore and junior years, students begin partnering with community agencies such as schools and family resource centers, health departments, county extension agencies, senior citizens centers, hospitals and other community groups, and are assigned families or individuals to whom they provide education about wellness. Through partnerships with these community agencies, senior nursing students gather information and plan long-term programs to address these needs the community has identified.

With clinical student assistance, partnering agencies are able to expand their programs to meet additional needs. Sometimes these partnering agencies aren't focused solely on health care, so the insights of Berea nursing students can be especially valuable. For example, when teachers in the

Jackson County schools wanted to improve their interaction with special needs children, Berea students provided a day of professional development. They taught the teachers about resources available to help them deal with the mental health needs of these children. Another project was a nutrition program at Tyner Elementary in Jackson County. Students



Photo courtesy of John Stacy, '01.

*Participants exercising in the Healthy Hearts 2000 program, begun in Jackson County, Ky. by nursing students John Stacy, '01, from Hazard, Ky., and Nyima Yangzom, '01, of Tibet.*

taught fifth graders about the importance of good nutrition, and the University of Kentucky Extension Service helped the children plant fresh vegetables in a school garden.

Berea students have created award-winning clinical projects. John Stacy, '01, a recent graduate from Hazard, Ky., and his clinical partner Nyima Yangzom, '01, of Tibet, were awarded the Julia Drukker Stammer Award for a nutrition and exercise program they designed for elderly residents in Jackson County. Through a partnership with the Jackson County Health Department, the students created Healthy Hearts 2000, which targeted all elderly individuals regardless of their physical condition.

**“The continual hands-on experience is irreplaceable as we work to become community nurses and leaders.”**

Stacy explains the goal of the program. “We wanted to help elderly people stay motivated and mobile, to give them something they could do to improve their health.” The program consisted of low-impact exercise, nutrition education, and screening for blood pressure, cholesterol and diabetes.

Stacy felt he benefited from the one-to-one interactions with the participants. “I learned how important it was to listen about patients’ daily lives,” he recalls. “You can pick up on how they might need help in other areas. The continual

hands-on experience is irreplaceable as we work to become community nurses and leaders.” Stacy notes that the instructors were always available to provide assistance to students, but he stresses the value of learning through a relatively autonomous clinical experience. Making his own decisions in a community setting proved an important learning tool.

This particular clinical project will impact the elderly in Jackson County for years to come. The Jackson County Health Department has maintained files on each program

**“The people we had contact with really touched our lives. We didn’t realize how much we had touched one another until the end of the semester.”**

participant and will continue to offer screening, exercise and educational programs to these residents. The community was not the only long-term beneficiary of the program.

“The people we had contact with really touched our lives,” Stacy says. “We didn’t realize how much we had touched one another until the end of the semester.”

“Holistic health is the foundation of Berea’s program,” Hosley concludes. For over 100 years, and now at the beginning of a new century, Berea’s nursing program is keeping up a community tradition of service and better health through education.



Photo courtesy of Hutchins Library Special Collections

*Student nurses of the class of 1960 are shown above ready to leave for a five-county eastern Kentucky area where they were in field training in public health. Shown with the student nurses (left to right) Mrs. Bernice T. Hopkins, assistant professor of nursing, Miss Nancy Wilson, Instructor, and Dr. Beulah Miller, Chairman of the Department of Nursing. The project, the first such experience offered by Berea College, was in cooperation with the local county health departments and the Division of Nursing of the State Health Department.*

# OF MICE AND MAYO

## *Dr. Chella David's special mice help doctors fight disease*

By Ann Mary Quarandillo

**D**r. Chella David, '61, has contributed to several Nobel Prize winning studies. His research in immunogenetics takes up two full floors at the Mayo Clinic in Rochester, Minn. His results affect laboratories worldwide, from France to Japan and all over America.

Dr. David raises mice.

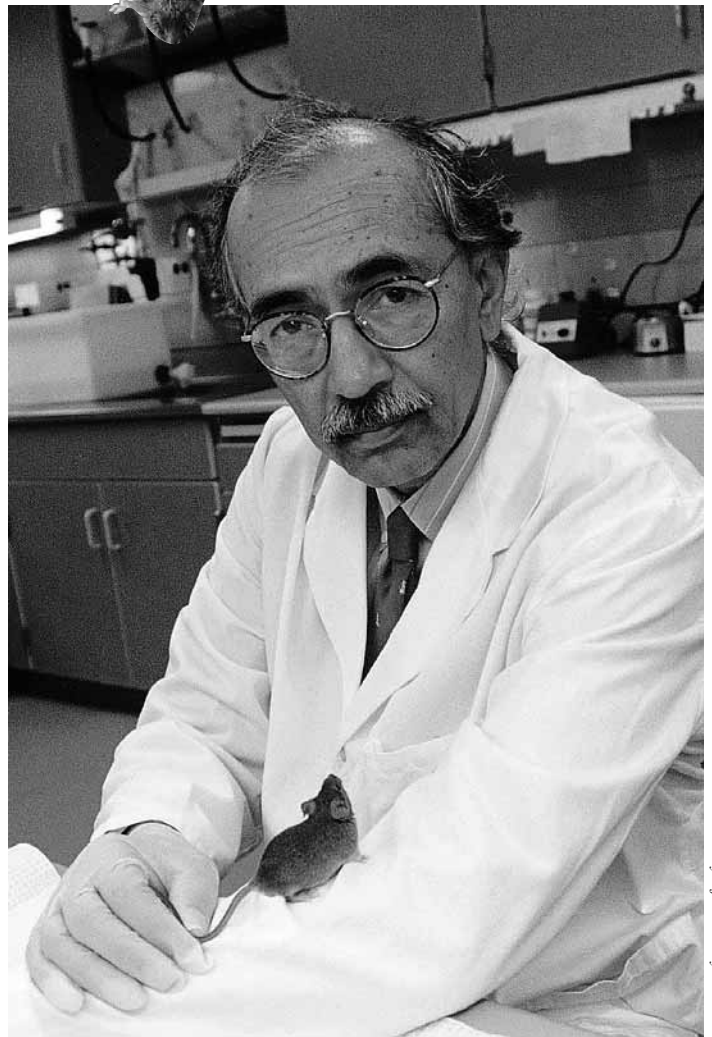
Not just any mice, but mice that make a difference for millions of disease victims.

David leads the largest laboratory at Mayo, with 30 researchers working on the genetics behind specific diseases. "We basically want to know why, when two people are both exposed to the same virus, one gets it and one doesn't," David explains. "Our work focuses on how a particular gene causes disease in this person."

**David leads the largest laboratory at Mayo, with 30 researchers working on the genetics behind specific diseases. "We basically want to know why, when two people are both exposed to the same virus, one gets it and one doesn't."**

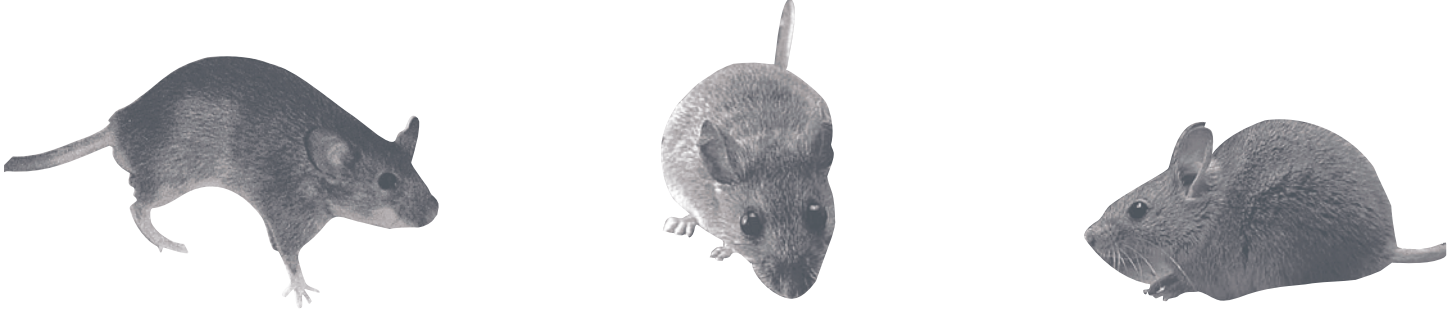
His work in immunogenetics was encouraged when David was a young post-doctoral researcher in the early 1970's at the University of Michigan-Ann Arbor under George Snell, the Nobel Prize winner widely credited with being a founder of the field of immunogenetics. It was there that he helped 1996 Nobel Prize winners Peter C. Doherty and Rolf M. Zinkernagel in their studies of how the immune system recognizes and attacks viruses.

Today, David continues to look at the complex causes behind long term diseases with specially bred "transgenic mice" —part mouse, part human. No—this isn't a science



*Photo courtesy of the Mayo Clinic*

*Dr. Chella David's transgenic mice, which have human immune systems, are raised in a pathogen-free laboratory so researchers can determine exactly to which bacteria the mice have been exposed. Everyone entering the room, including David (above) must wear special gowns, masks, shoes and gloves to guarantee a completely sterile environment. "Once the mice leave their pathogen-free lab, they can never go back," he says. As soon as they're taken from their sterile environment, the mice are exposed to different types of bacteria to see which infectious organisms cause the autoimmune diseases to develop.*



fiction movie. When you walk into the sterile “mouse condo,” you don’t see giant mice with human heads. You do see thousands of cages hidden behind sterile entryways, and masked scientists carefully working with these very special mice. David and his colleagues produce mice with human-like immune systems by inserting human DNA inside the nucleus of a mouse embryo. These mice can then be studied

**David collaborates with a number of physicians at the Mayo clinic to help patients suffering from cancer, arthritis, asthma, diabetes, multiple sclerosis and AIDS, among others. “We’re hoping to gather enough information from the mice to correct the malfunctioning genes.”**

as they react to different diseases. David’s team uses the mice in its own research and provides them free of charge to university laboratories around the world.

David’s main focus is on autoimmune diseases, where the body’s immune cells malfunction. Instead of recognizing and destroying foreign antigens such as infectious organisms that may cause illness, the cells attack the body’s own tissues. “We learn more every day about how human genes predispose an individual to disease. For example, if the gene causes the destruction of joint tissue, people get arthritis. If brain tissue is killed, multiple sclerosis can develop—it all depends on what the target is,” David says. “Our research focuses on discovering what causes the genes to malfunction.”

David collaborates with a number of physicians at the Mayo Clinic to help patients suffering from cancer, arthritis, asthma, diabetes, multiple sclerosis and AIDS, among others. “We’re hoping to gather enough information from the mice to correct the malfunctioning genes,” he says. “We also hope to create vaccines to prevent bacteria from aiding in the development of autoimmune diseases.”

Growing up in India, David hardly dreamed that he would end up a world-famous scientist. When he went to college in India at age 16, his first taste of freedom led to too much fun and not enough studying, and he left after the first semester. He returned to his family’s home in Ooty, a resort area high in the mountains of south India, and became a typist in an office there.

At this time, in the early 1950’s, there were two ways to get to Ooty, which sat forty miles up a mountain. The train, which circumnavigated the mountain, took five to six hours. The bus only took two hours, but the multiple hairpin turns made tourists ill by the time they reached the top. David realized he could taxi tourists up the mountain in his father’s car. The road he traveled in his “taxi” was the beginning of his road to America.

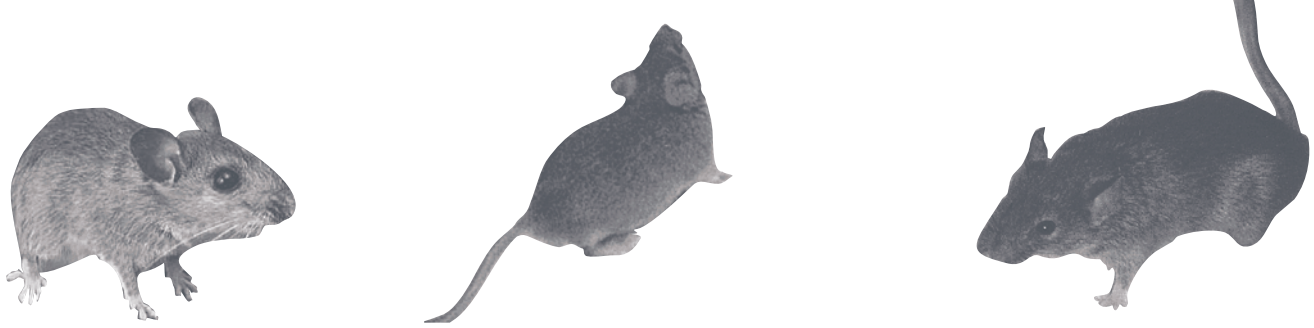
“In 1955, a friend of my family’s asked me to pick up a passenger who traveled all over the world doing missionary



*David and his wife Judy live in the oldest house still in use in Rochester, Minn., built in 1863. They bought the home after their six children moved out of a larger one up the street. David and his first wife, Hazel Tallent, ’61, whom he married on graduation day in Danforth Chapel, have two daughters: Sheila, a professor of chemistry at the University of Utah, and Lila, who lives in Maryland. Judy’s three children are all architects—Jenny in Seattle, Colin in San Francisco, and Chris in Chicago. Their son Shanth is a stockbroker in Atlanta.*

work,” he recalls. “Since I had gone to English schools, I spoke English pretty well, and this man was impressed with my ability. He wanted to know what I was doing driving a taxi! I told him I wasn’t really a taxi driver—I was just doing this for a few years to figure out what I wanted to do with my life.”

The missionary suggested that David go to college in America, where the educational structure might better suit him. David laughed. “I said ‘I don’t know anyone in America!’” Plus he didn’t have the money to go halfway around the world. But the missionary had a suggestion.



“He said he had been traveling in America, and he had visited a college named Berea College, where you can work your way through,” David recalls. “He told me about a person named Mr. White who was a personal friend of his, and offered to write him for me.”

David’s eye doctor in India, an American missionary named Dr. Jeffries, had been a classmate of President Hutchins, and wrote him on David’s behalf. David wrote to the college as well, passed his English competency exam, and could hardly believe when he received a letter saying he was accepted. But India was a very conservative country at the time, and refused to give him a passport. The only way David would be allowed to leave was if it were a special circumstance, since the government felt he was able to get his college education at home. Berea came through again.

“I wrote Mr. White and told him the difficulty I was having,” says David. “I asked him if they could write a letter saying that I was a special candidate for some program we didn’t have here in India. I didn’t really believe they would do that for someone about whom they knew so little.”

But they did. Berea wrote a letter to the Indian government, citing the commitment to “all peoples of the earth,” and indicating that they were seeking international students to globalize the campus. David would represent India, as

they had no other Indian students at the time. “The minute they heard ‘represent India,’ my passport was guaranteed!” David recalls.

David firmly believes that his whole journey to Berea was made possible by the goodness of people. When he arrived in New York with no money, an African American taxi driver gave him a free ride to a hotel, where he was able to stay on his promise to pay when he received his check. His first meal in America was a White Castle hamburger and a Coke, again given on credit. He was careful to pay back his benefactors, and was rewarded when he arrived in Berea at midnight on a September evening. He knew no one would be up that late at the college, so he

**“I knew Berea was a place where everything was going to be o.k. . . I can’t think of another place where the college is so supportive of students.”**

settled down on the train platform to sleep, when he heard someone calling his name.

“It was a man from the registrar’s office,” David says. “They had actually sent someone down to meet me. He took me to Blue Ridge and got me settled in. From that moment on, I felt like my life was going to be o.k. I knew Berea was a place where everything was going to be o.k.”

David, an agriculture major, says he owes a great part of his success to Berea. “I can’t think of another place where the college is so supportive of students,” he says. His labor assignments in the dairy and on the poultry farm sparked his interest in animal science. He earned his master’s in animal science and genetics at the University of Kentucky, and his Ph.D. in animal science and genetics at Iowa State University, where Dr. W. Robert Parks, ’37, was serving as president. He began working at Mayo in 1977, when they recruited him to begin their immunology department, and gave him a whole floor for his laboratory.

“I look back on my life, and I think ‘what if I hadn’t picked up that guy in my taxi?’” David concludes. “What if Berea hadn’t written that letter to the Indian government? My life would be so different today.”

And so would the lives of countless disease victims, who can now say they’ve been helped by the taxi driver from Ooty.



Photo courtesy of Chimes yearbook.

*Sports helped David fit in at Berea, where he played soccer (circled above) and tennis. But he was also involved in theater, choir and country dancing. “I tried to do a little of everything,” he recalls. “I think that’s why I have so many friends to remember.”*

# A REAL PLUS

## *Berea education invaluable for two-physician family*

By Linda C. Reynolds

“We’re just two regular people and both of us pitch in,” says Dr. Ann Adams Hays, ’78, about how she and husband Dr. Lon Hays ’78, mesh two medical careers, three children, schedules, and a busy sports life.

The couple met at Berea in 1975 and found they had a lot in common. As biology majors, they attended the same classes and had mutual friends. Best friends by their short term ecology class in the Everglades, Ann modestly says “we sort of fell for each other.” They married between their third and fourth years at University of Kentucky Medical School.

Both continue their passion for sports—Ann played college basketball, field hockey and as a senior was the only woman on the golf team. “Roland Wierwille needed bodies—he was desperate,” she laughs. Ann is captain of a U.S.T.A. Lexington tennis team and Lon, who was nationally ranked while playing at Berea, plays U.S.T.A. tennis regularly.

The Hayses fondly recall the “pluses” of their Berea education: small classes, small campus, individual attention from professors, sports and extracurricular opportunities (Lon was a Country Dancer), and the labor program.

These pluses paid off in medical school.

“That’s when Berea’s ‘important life lesson’ kicked in,” echo Lon and Ann. Or as Lon explains, “You learn how to structure your time to do in the course of a day all you need to do.”

Out of their class, eight students applied and seven were accepted to medical school. The couple remembers two of their first-year classes as “very demanding.” Students from larger universities had already studied histology and embryology, whereas coming from a liberal arts college, those two classes were not offered. But by the second year, they say, “we were on an even playing field—the classes were new to all the students.”

“My labor assignment was perfect training for medical school,” says Ann. “I worked under Dorothy Grossman in the hospital lab learning to draw blood, differentiate blood cells and interpret lab reports.” Lon also appreciated his training. “As a morning person, I enjoyed working the



Photo by Linda C. Reynolds

*Lon and Ann Adams Hays, with daughter Kathryn. The Hays children — Lon, 16, Karolyn, 12, and Kathryn, 9, play tennis, soccer and golf. Lon and Karolyn are state ranked tennis players and Karolyn’s team won a state cup in soccer.*

breakfast shift in food service my first year,” he remembers. “Then I moved to the microbiology laboratory, which was a big advantage in medical school.”

Both are on staff at the University of Kentucky in their respective disciplines.

Ann “loves working at Student Health Services because it’s a great place to work and get to know the students.” She also coordinates and lectures fourth-year medical students who do an elective rotation in student health. As a student health physician, she is on an academic, nine-month calendar which frees the summers for more family time.

**“Clearly, I see the Berea students have a stronger work ethic and dedication that I think is due directly to the labor program.”**

Lon’s clinical, research, and educational focus is with drug and alcohol abuse and dependence.

“There’s the possibility of helping someone turn his or her life around,” he explains. “Like any chronic disease, people suffer negative consequences from addiction. It’s rewarding to intervene in the process and see them affect some very positive changes in their lives.”

As chair of UK’s Psychiatric Department for one and a half years, he lectures second year medical classes, third year medical students that rotate in psychiatry and neurology and psychiatric residents in training. His teaching areas include psychiatry, addiction and geriatric psychiatry. He also supervises clinical residents as they see patients, and residents, medical students and physicians assistant students who rotate at Ridge Behavioral Health where Lon is medical director and does in-patient work.

As medical director, working with students from many colleges and universities, he notices a pattern. “Clearly, I see the Berea students have a stronger work ethic and dedication that I think is due directly to the labor program,” he says.

Berea’s “pluses” continue to train new students to meet the challenges they face, just like the Hayses.

# WELLNESS FOR A LIFETIME

## *Encouraging Bereans to think healthy*

By Sudie Eisenbarth

What do Tai Chi, yoga, weight training and a walking club all have in common? They are just a few of the activities now sponsored by the Berea College Wellness program, committed to promoting health and wellness for students, faculty, staff and retirees.

Last June, Holli Hudson, '89, was hired as director for the College's Wellness department, where she immediately started a program to encourage people to think about health and the overall benefit of exercise and nutrition. Hudson holds degrees in physical education with a minor in health from Berea College and a masters in health education from Eastern Kentucky University (EKU), with doctoral work in health education at the University of Utah.

**The overall goal of the Wellness Program is to develop long-term life skills through exercise and nutrition for a long and productive life.**

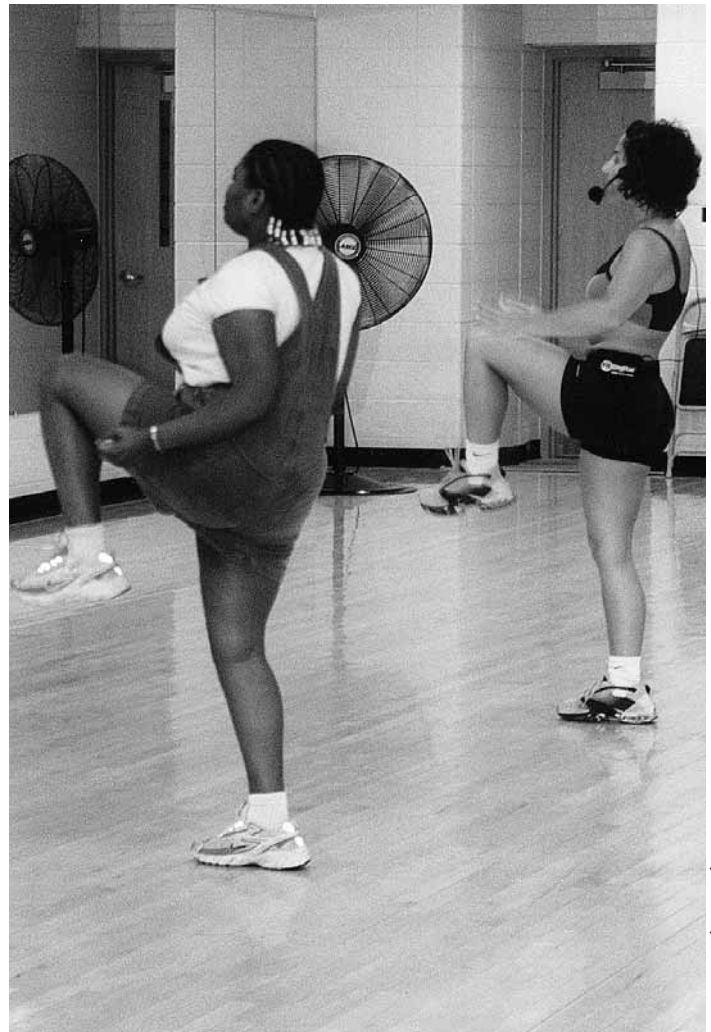
"One of the things I wanted to do right off the bat was to let people know the Wellness program was starting and the things we were trying to do," recalls Hudson.

The first Wellness classes introduced Tai chi, yoga and a walking club, and quickly became very successful. More classes were added. Hudson designed a screening program called "Wellness Wednesday," to identify participants showing signs of high blood pressure or high cholesterol, encouraging those at risk to watch their diets and to utilize exercise programs.

Hudson has found it challenging at times to design programs for the College's broad audience of students, faculty, staff and retirees.

"They are different populations, so you have to do programming that looks at the overall organization," explains Hudson. "It's really difficult for students to see the long term, but we try to encourage them to look at nutrition and exercising, because we do have health problems on our campus."

Mary Musser Nash, Cx '52, '85, a retiree from the College, is an active participant in several of the Wellness

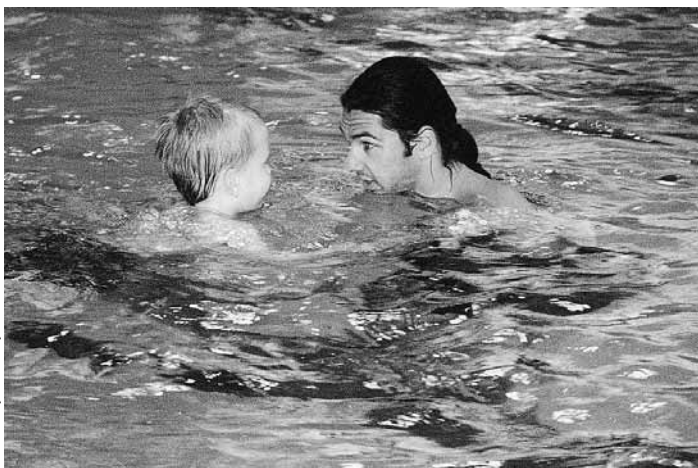


*Instructor Kelly Parsons (right) leads one of the Wellness program's popular aerobics classes.*

*Photo by Tinsley Carter, '04*

programs. "I am in pretty good shape for someone my age," says Nash. "I walk three to five miles a day and started using the weight room when a class was offered for age 50 and over.

"I think the Wellness Program is a good thing and I hope it continues," Nash adds. "I wish more people would get involved."



Michael Gerasimopoulos, '02, of Thessaloniki, Greece, teaches a young participant how to swim.

Studies show this region of the United States has a high incidence of obesity, cardiovascular disease and high blood pressure. The Wellness program is trying to address these health issues, starting with the campus population. In the future, Hudson plans to branch out and work with those in the community and with other coalitions in Madison County to identify and address health issues.

"Ultimately, it's the culture and the environment we want to change in order for people to be well," Hudson says.

The College's Intramural programs, also under the auspices of the Wellness Department, needed to be revamped and reorganized when Hudson started. They have become very successful, with more students participating in intramurals over the 2000-01 school year than anytime in the past ten years.

"More students are getting out and being active in various sports," says Hudson. "We're trying to increase the number of activities we offer, both competitive and non-competitive, to keep them interested."



In summer 2001, the Wellness program offered Camp Chameleon, a day camp for local children. Holli Hudson, '89, (standing) directs the camp activities.

**Studies show this region of the United States has a high incidence of obesity, cardiovascular disease and high blood pressure. The Wellness program is trying to address these health issues, starting with the campus population. In the future, Hudson plans to branch out and work with the community and other coalitions to identify and address health issues.**

In addition to Hudson's role in the Wellness program, she is coaching women's volleyball at the College this year. Hudson played volleyball while a student at Berea and has previous coaching experience.

The Indiana native says she and her family try to embody the spirit of the Wellness program, enjoying the outdoors, biking and hiking. "We love Kentucky State Parks," declares Hudson. "We hike the trails up at Cave Run and go to Cumberland Falls to do the trails down there." She has a son, Sterling, nine, and two stepchildren, Kelsey, 18, and Colby, 21. Her husband Steve is the director of admissions at Eastern Kentucky University in Richmond.

The overall goal of the Wellness Program is to develop long-term life skills through exercise and nutrition for a long and productive life.

"I'd like us to be more active as a community and help our children be more active," Hudson says. "I really love the whole idea of trying to encourage people to have a healthier lifestyle."

## Wellness Programs Offered

Body Composition  
Testing

Aerobics

Lap Swim

Water Aerobics

Water Exercise

Water Arthritis

Walking Club

Tai Chi

Weight Training Basics

Yoga

Wellness Wednesdays

Camp Chameleon

Swimming Lessons

Bocce Ball

Sand Volleyball

Youth Weight Training

Racquetball League

Massage Therapy

Smoking Cessation

# THE IMPORTANCE *of mentors*

By Timothy W. Jordan

**W**illie J. Parker, M.D., has created a successful career in medicine by combining his personal and professional interests, and by listening to his mentors. “I have a great love of science and for people,” states Parker, ’86. “Medicine allows me to combine both of those.”

After graduating from Berea College with a biology major/chemistry minor in the secondary education track, Parker attained his M.D. in 1990 from the University of Iowa College of Medicine. He then completed his residency in obstetrics and gynecology at the University of Cincinnati College of Medicine in 1994. Parker also worked two years with the Centers for Disease Control and completed a one year residency in Preventive Medicine. After several years of active medical practice in obstetrics and gynecology, Dr. Parker now serves as the Chief of Maternal and Child Health Programs for the California department of Health Services. Headquartered in Sacramento, Parker faces the challenges that come with directing 14 different multimillion dollar programs for women and children in California.

A native of Birmingham, Ala., Parker acknowledges the positive influence others had on him. He grew up in the same community as Michael D. Moore ’77. In Moore, Parker found a baseball coach, a pastor, and his introduction to Berea College. Later, during his senior year in high school, Parker—as student body president—was responsible for coordinating the school’s “College Day,” during which he hosted Carl Thomas, ’78, associate director of Minority Services with the Berea College admissions office. Rather than pursue the athletic scholarships other schools were offering, Parker chose the academic advantages Berea College could provide.

As a Berea College student, Parker found other mentors who were especially influential, both on his life and his career. “Dr. Thomas Beebe was very encouraging,” Parker recalls. “I remember specifically my general chemistry class. When many classmates were struggling, he wrote on one of my papers ‘Excellent work! What do you plan to do after you get your degree? Talk to me after class.’ Dr. Beebe had a profound impact on my career choice (in medicine). Originally I came to Berea to prepare to teach high school.”

During the break between his sophomore and junior years, someone at the University of Alabama-Birmingham suggested he apply for the Harvard Summer Health Professions program. “It was there that I found I did, in fact, have an aptitude for medicine,” Parker continues. He returned to Berea, determined to go into the medical field.

While reflecting on his years as a Berea College student, Dr. Parker mentions one of his most memorable experiences.



“I had the opportunity of working for six months as a researcher for Alex Haley. Haley, who was a Berea College Trustee, had asked for a couple of students to help him with research for a book he never finished (before his death).” Parker explains that the book was to be about the experiences of a black grandfather in Appalachia in the 1920’s.

“Ed Ford, Fd ’54, Cx ’58, and Ann Ford, in the College public relations office, referred me to Haley and I took on the research project as a six-month, secondary labor assignment,” Parker continues. “I researched race relations in the Appalachian region and was pleasantly surprised to find there was less racial tension during that era in Appalachia than in the rest of the country. The livelihood and survival of blacks and whites were so intertwined—such as helping each other to harvest their crops. There just weren’t the same tensions that existed elsewhere. Working on this with Haley, who was such a well-known author, was a great experience.”

Parker found another mentor in Dr. Michael Rivage-Seul, professor of general studies and religion. “He was my teacher in my Issues and Values class,” says Parker. “He helped me learn how to be a critical thinker, something that has been helpful to me, both spiritually and in my profession.”

During his rare moments of free time, Parker pursues some of his hobbies. “I love salsa music and Latin dancing. I also enjoy chess, jazz music, physical fitness and spirited debate,” he says. “Although I don’t fancy running for political office, I think of myself as somewhat of a ‘political hack.’”

Parker’s hard work, both as a student at Berea College and as a professional in the field of medicine, has been recognized through the presentation of many awards and honors. At Berea, Parker received the E. R. Brann Good Citizenship Award and the Homer E. Williams Award for Promoting Interracial Understanding. Dr. Parker is slated to receive the 2001 Outstanding Young Alumnus Award, which will be presented at Homecoming, November 16-18, 2001. He is the new president of the Berea College Alumni Association.

There is one professional honor that Dr. Parker especially treasures. “The award I feel is the most significant is the National Health Service Corps’ Director’s Award, a national recognition for providing health care to the medically underserved,” Parker states. “This award, for service to people who need medical care but cannot afford it, is especially meaningful because it reinforces the value of service to others that is so much a part of Berea College.”

Today, through his love for people, his passion for his profession, and heeding wise counsel, Dr. Parker touches the lives of thousands of people. His mentors would be proud.



**B** Undergraduate Research

## BEREA'S BEST AND BRIGHTEST

### *Alums help a new generation explore medicine*

By Julie Sowell

**D**r. Harold "Hal" Moses, '58, director of Vanderbilt University's Vanderbilt-Ingram Cancer Center, is responsible for assembling the best and brightest doctors and scientists for the Center's leading-edge cancer research programs. For the past two summers, Berea College students have been among this select group, expanding the scope of Berea's commitment to students' undergraduate research.

**Moses has developed Vanderbilt-Ingram into one of the nation's top 25 cancer research centers. It is one of only 40 centers in the United States to earn the National Cancer Institute's highest distinction as a Comprehensive Cancer Center.**

Pre-med majors Jacqueline Price, '02 and Cassandra Covington, '03, have not only been able to intern at one of the nation's top medical research facilities, they've had the opportunity to learn from two distinguished physicians and medical researchers, who also happen to be Berea alums. Moses and Dr. Sarah Hamilton Sell, '34, are helping a new generation of Berea students who aspire to careers in medicine.

Moses has spent more than 35 years as a distinguished physician and researcher engaged in the war on cancer. A native of Whitley County, Ky., where his father was a coal miner, Moses earned his medical degree from Vanderbilt after earning his B.A. in biology at Berea. He has been a Trustee of Berea College since October 2000.



Photo by Ann Mary Quarandillo

*Jacqueline Price, '02, spent this summer as an intern at the Mayo Clinic in Rochester, Minn.*



Since 1985, when he was recruited from the Mayo Clinic to lead the creation of Vanderbilt's Cancer Center, Moses has developed Vanderbilt-Ingram into one of the nation's top 25 cancer research centers. One of only 40 centers in the United States to earn the National Cancer Institute's highest distinction as a Comprehensive Cancer Center, Vanderbilt-Ingram includes a cancer clinic, inpatient units in Vanderbilt Hospital and more than 100 laboratories throughout the university and medical center.

**Moses and Sell cite their experiences at Berea as giving them a good educational foundation. Chemistry Professor Julian Capps, who taught at Berea from 1925 to '58, was remembered fondly by both as a demanding but excellent teacher who prepared them well for the rigors of medical school.**

Moses initiated efforts to recruit Berea students for summer research at the Center in the spring of 2000 and Price, a biology major from Walhalla, S.C., met the qualifications. But it was an experience that almost didn't happen. After visiting Vanderbilt and excitedly making plans to take advantage of the challenging opportunity, she realized that the stipend, if used to pay rent and other living expenses in Nashville, would leave her without funds she was expected to save toward her next semester's expenses. Sell, who had met Price on her earlier visit, came to the rescue.

"I live in a big house," Sell says. "The third floor was empty and I'd been thinking of taking in a medical student. When I was asked if I could help Berea find Jacqueline an inexpensive place to live I said, 'Well, sure, and I can do better than that. She can come stay with me.'"

Sell is a pediatrician and pioneering bacteriologist whose research efforts led to the development of a childhood meningitis vaccine. Now part of the routine series of immunizations given to all infants in the U.S., the vaccine has virtually eliminated this disease which, before antibiotics, was almost always fatal. In addition to her B.A. in biology from Berea, Sell earned her medical degree and a masters degree in bacteriology from Vanderbilt University and also has a doctorate in infectious diseases from Louisiana State University. A member of the Vanderbilt Medical School

faculty from 1954-78, Sell also had a second, 13-year career with the Tennessee Department of Health, from which she retired in 1992. The first woman elected president of the Nashville Academy of Medicine, as well as the first woman to serve on the admissions committee for Vanderbilt Medical School, Sell has won numerous awards for both her professional and volunteer activities, including Berea College's Distinguished Alumnus Award in 1985. In December, she will be the speaker at the Recognition Ceremony for mid-year graduates and also will be awarded an honorary doctorate from the College for her lifetime achievements.

Price says she felt fortunate to have shared Dr. Sell's company last summer. "I learned so much from Dr. Sell, who has a passionate commitment to both her family and to research," says Price. "She helped me clarify my own goals and what kind of doctor I want to be."



Photo by Julie Sowell

*Dr. Sarah Hamilton Sell, '34, Dr. Harold "Hal" Moses, '58, and Cassandra Covington, '03, discuss their research in Dr. Moses' Vanderbilt University laboratory.*

Both Moses and Sell cite their experiences at Berea as giving them a good educational foundation. Chemistry Professor Julian Capps, who taught at Berea from 1925 to '58, was remembered fondly by both as a demanding but excellent teacher who prepared them well for the rigors of medical school.

Research jobs during their undergraduate or graduate school years proved to be influential experiences for the course of both Sell's and Moses' careers, and they both understand the importance of providing those opportunities for new students. In the summer of 1933, between her



junior and senior years at Berea, Sell worked for no pay in the state health department laboratory in her hometown of Birmingham, an experience that landed her her first job after she graduated. Moses got his first research experiences as a medical school student. “I began doing projects and discovered how much fun it was,” said Moses. He ended up specializing in pathology and has focused on research ever since.

The focus of Moses’ cancer research is hormone-like compounds called “growth factors” that are secreted in human cells. His discovery 20 years ago of a Negative Growth Factor named TGF-Beta, which inhibits instead of stimulating cell growth, has affected the way cancer is studied and treated around the world. The summer research of Covington and Price involved looking at how TGF-Beta affects genes, work that employs the latest techniques in cancer research, such as gene cloning and splicing. Moses had high praise for the work of both students.

**Both the Cancer Center and the students benefit from the students’ laboratory work. Students contribute significantly toward the many areas of cancer research going on simultaneously at the Center. The hands-on experience helps them develop their research skills and clarify their future goals and interests.**

“Both Cassondra and Jacqueline did a great job,” says Moses. “Berea students are bright, well-prepared and learn very quickly.”

Covington, one of two Berea students at the Medical Center this summer, was recruited by Moses to work in his lab after he heard a presentation she gave at a Berea Board of Trustees meeting. The other Berea student, Amanda Roberts, ‘01, worked with neurologist Dr. David Charles.

Both the Cancer Center and the students benefit from the students’ laboratory work. “There are roughly 1500 students employed each summer,” says Moses. “They contribute significantly toward the many areas of cancer research going on simultaneously at the Center.” The students’ hands-on experience helps them develop their research skills and clarify their future goals and interests.

“It was a great experience,” says Covington, a Birmingham native. “It was amazing to discover how much is involved behind the scenes—how many really specific procedures go into this kind of research.” Majoring in neurobiology with a minor in Spanish, Covington plans to enter a dual M.D.-Ph.D. program and do experimental research.

“I’m not sure what research area I’ll end up in,” she says, “but I’ve become really fascinated with cancer biology, so that might be the direction I choose.”

Both Covington’s and Price’s learning extended beyond the laboratory, as they attended medical school seminars and visited treatment facilities. Shadowing doctors as they cared for cancer patients was especially valuable for Price, who plans to become an oncologist, or cancer treatment specialist. It also created an interest for her in what is known as “translational research,” the bridge between research and medical practice.

“The practitioners are doctors who find ways to most quickly bring the results of research to patient care,” explains Price. “That really appeals to me.”

Building on her Vanderbilt experience, Price spent this past summer conducting research at the Mayo Clinic in Rochester, Minn. There she shadowed Dr. Judith Kaur, one of only three Native American oncologists in the U.S., an important experience for Price who is herself of American Indian heritage.

Time spent in the service-oriented Bonner Scholars Program, through which she volunteered in the Hospice Program at Berea Hospital, as well as her experiences at Vanderbilt and Mayo, have also led to Price’s decision to apply for a Watson Fellowship this spring.

“Between graduating from Berea and beginning medical school I’d like to take a year to study palliative care in other countries,” she says. “Other cultures approach care for the dying in different ways. Gaining an international perspective on how we care for people in their final stage of life will make me a better doctor.”

The road to becoming a doctor is a hard one at best, and the advancement of medical science and treatment requires doctors who’ve had the very best preparation. “The challenge,” says Moses, “is to train people who are better than we are.”

The support and guidance from teachers and mentors, combined with outstanding learning opportunities such as those made possible by Drs. Moses and Sell, are giving a new generation of Berea students an edge that just might help them become tomorrow’s medical trailblazers.

“Inspiring, demanding, very caring, wanted you to do your best,” is how D. Edward “Eddie” Kennedy recalls his professors at Berea. “That’s the kind of caring you can get (at Berea.)”

Kennedy, '68, was honored with the Distinguished Alumnus Award during the Summer Reunion '01 Alumni Banquet. In addition to his award winning Drama program at Berea Community School, Kennedy is a talented playwright and actor. He has won the prestigious Eudora Welty Award, and had one of his plays made into a film by Kentucky Educational

Television (KET). Kennedy’s wife, Norma Proctor Kennedy, Cx '80, is office manager for the Berea College Alumni Association.

“It’s family, I think, that makes Berea so special,” Kennedy emphasized. “No matter who I’m talking to here, we all have the same feeling. We truly, truly love Berea. We’re just one big family. It’s all basically about family and about the values. We found great people to teach us who believed in the values of Berea College, who allowed the dream to keep going and the vision to keep going.”

Rev. Lee Morris, retired Campus Minister, was made an honorary alum at the Alumni coffee on Saturday. Dr. P. David Nelson, '65, chair of Berea’s history department, received the Rodney C. Bussey Award of Special Merit. Virginia Ferrill Piland, '43, longtime volunteer at the College, received the Alumni Loyalty Award.

An estimated 1400 alumni and their family members and friends attended the weekend activities, which included a picnic, luncheon, and reunions for 11 classes. Reunion activities concluded with Sunday morning worship at Union Church.

# SUMMER REUNION 2001

## *Celebrating the Berea family*



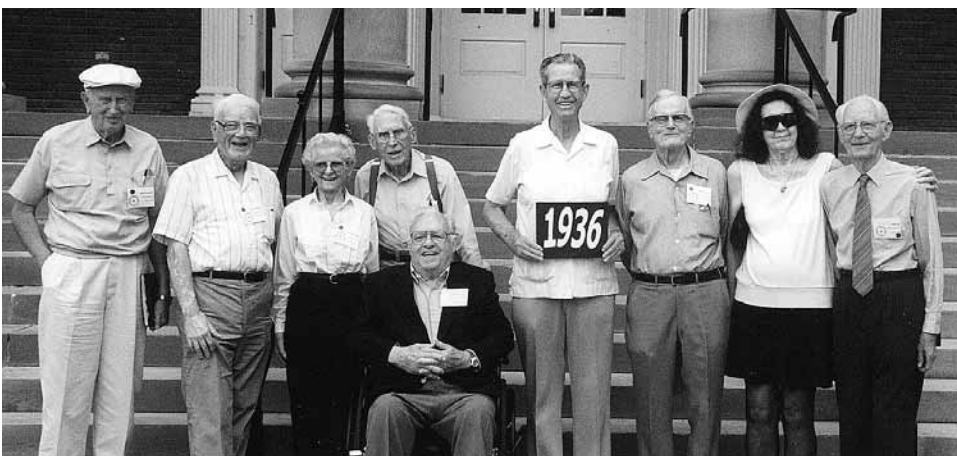
Alumni award recipients Dr. Paul David Nelson, '65, Virginia Ferrill Piland, '43, and Rev. Lee Morris, with Alumni Association Director Jackie Collier Ballinger, '80.



D. Edward “Eddie” Kennedy, shown above receiving the Distinguished Alumnus Award from Berea President Larry D. Shinn, praised many of his professors, including long time theatre professor Paul Power, his inspiration for his theatre career.



Bereans enjoyed meeting actress Geena Davis, who attended Summer Reunion with her father, William F. Davis, '36, and mother Estelle Davis.



### Class of '36

First Row: Lloyd Roberts. Second Row: Delmas Saunders, Larry P. Morgan, Ethel Beattie Bailey, T. Porter Bailey, George Ely, William F. Davis, Evelyn Marsh Ely, Ernest Hill



## Class of '41

*First Row: Corleene Shumate Hammond, Katie Stith Moore, Eileen McDaniel Prewitt, Fay Mills Hale, Anna M. Smith Fielder, Dorothy Prince John, Leona Patterson Burden. Second Row: Phyllis Douglass Abbott, Beryl Wilson King, James T. Prewitt, Jewell Ingram Seay, Joe S. Carnes. Third Row: Harold D. Rosenbaum, Charley F. Hale, G. Wayne Eisenhower, David G. Shultz, Howard C. Pilson, L.T. McClure.*

## Class of '46

*First Row: Jan Rose Cotton Carpenter, Glenna Smith Lett, Lucille Davis Juett, Bernice Clark Hall, Aline Goodwin Douglas, Mary K. Fielder Kauffman. Second Row: Donald E. Lainhart, Helen Davis Hieronymus, Virginia Balden Bellebaum, Ozella Hurst Gilbert, Forrest J. Williams, Robert L. Edwards. Not Pictured: Joyce Hardin Banks*



*The Class of '51 celebrated their 50th Reunion this year.*



## Class of '51

*First Row: Doug Kelley, Mary Corsi Kelley, Clara Eppard Brecht, Charles Honeycutt, Cleo Wilson Brown, Sheila Strunk Pyle, Wanda Branham Williams, Chuck LeMaster, Cherry Cook Kelly, Fannie Garrison Westfall, Eula Jean Lindon Meier, Mary Alice Seals Arnett. Second Row: Stokes Pearson, Pete McNeill, Milton B. Wise, Elenita Ellison Wise, Stan Shrader, John Bradbury, Hugo Miller, Bruce Kelly, Natalie Brown Chestnutt, Dot Talbott Greenawalt. Third Row: Fred Winebarger, Dan Capps, Ann Abels Pike, Patricia Mace Shelton, Eric Posch. Fourth Row: Galen Martin, James F. Robinson, Jean Ratcliffe Robinson, Bettie Williams Davis, Milton Davis, Arnold Edwards, Janet Webb Sparks, Betty Giles Robertson, Edith Morgan Litto, Edna Jones Rubio, Mary Ann Ledbetter Mobley. Fifth Row: Al Dowdy, Irene McDonald Johnson, Clay Johnson, Glenna Sawyer Rice, Martha Salter Wilson, David Litto, Beverley Fleming. Sixth Row: William Waller, Arthur L. Haynes, Gene E. Logan, Louise Archer Davidson. Seventh Row: W. Raymond Colley, Trudy Brewer Crites, Lilas Neal Franklin, John M. Ramsay, Edith Morelock Derting, John F. Derting, Robert Westfall. Eighth Row: Bruce Pittman, Carolyn Pittman, Raymond Beverly, Hugh Poston, Jim Grizzle, George W. Akins, Jr. Ninth Row: John R. Whitaker, Frances Farley Barrier, Leslie McCurry. Tenth Row: Robert Reed Rogers, George E. Barrier, Helena Jacobs Mink, Ted Smith, Charles M. Wesley.*



## Class of '56

*First Row: Sally Tappan Brown, Peggy Patterson Mull, Ray Ashcraft, Eloine Sutton Moores, Bud Case, Hazel Holt Williams. Second Row: Ruth Nichol Sass, Anita Stevenson Miniear, Rose Lutz Cassidy, Stewart Howell Anderson, Barbara Ledford Rueger, Erma Tolane Fielden, Cora Ball Sturgill, John Anderson. Third Row: Don Austin, H.H. Cheng, Margaret Marr Sammons, William M. Leach. Fourth Row: William Henry Young, Vernon Flynn, Jewell Cooke Ratliff, Sylvia Hitchcock Peace, Jackie Davis Perry. Fifth Row: Gay Looney Grider, Harry L. Smith, Lois Potter Grissom, Barney Davis. Sixth Row: Milton Boyce, Thomas Larry Dawson, Sam Grider, Myles Compton, Hallie Price Garner. Seventh Row: Carl L. Seldomridge, Ann Skidmore Turner, Tommy L. Clark. Eighth Row: Harry Ruff White, Wilda O'Dell Sutherland, Sylvene Osteen, Renee Dow Toy, Joyce Grogan Bryan. Ninth Row: Joyce Betler Estridge, Hugh F. Sutherland, Robert Bryan. Tenth Row: Mirneal Compton Brown, Sammie Mills Adams, Sadie Stines York, Bob Elkins. Eleventh Row: Betty Caroline Austin, Pearl Miller Wiesenhahn, E. Ann Hampton Peters. Twelfth Row: Pat Spangler, Earl Gilbreath, Charles Larew, Ralph Fort, James Peters. Thirteenth Row: Charles Brown, Dorothy Winston Larew, Jo Ann Marsh, Viola Couch Glassman, Mabel Herren Hare, Carolynne Fincher Bobbitt*

## Class of '61

*First Row: Eleanor Isaacs Helton, Madge Maupin Haney, David Dodrill, Sharon Newkirk Akers, Kathy King Prince, Elizabeth Rogers. Second Row: Annetta Buchanan Collins, Ruth Napier Bailey, Marlene Ellis Payne, Violet Johnson Farmer, Janice Mayhall McDaniel. Third Row: Laura Zimmerman Abramson, Treva Turner, Charlotte Childress Greer, Felix McDaniel. Fourth Row: Carol Geene Benette. Fifth Row: Bob Bennette, Blue Wooldridge, Eva Dorough Shepherd, Bob Shepherd. Sixth Row: Joyce Barnes Fields, Ival Secrest. Seventh Row: Eloise Pointer Plavney, Truman Fields, Nancy Rhudy, Nancy Allen Rose. Eighth Row: Elizabeth Smith Ackley. Ninth Row: Larry Blondell, Linda Stewart Rivers, Harold Molineu, Ruby Hampton Bundy, E. Gene Bundy. Tenth Row: Price Clayton Rivers, John V. Payne. Eleventh Row: Vance Davis, Ruth Whited Campbell, Marcella Browning. Twelfth Row: Gene H. Campbell, Charles Simpson. Thirteenth Row: James E. Parks, Paul S. Percy. Fourteenth Row: Larry G. Owen, Smith T. Powell*



## Class of '66

*First Row: Linda Wear Blair, Carol Cruse Singleton. Second Row: Larry Blair, Rita Hawks Spence, James Dean, Iverson Warinner. Third Row: Roger Vanover, Sheila Anderson Willis. Fourth Row: J. Bruce McKinney, Rachel Upchurch Owens, Eddie Kennedy, Robert L. Martin, Tom Hutchins. Fifth Row: Betty Koger Lucas, Chuck Eckler, Frances Nichols Rogers, Curtis Deel, James "Bones" Owens, Danny R. Bush, Paul E. Lewis. Sixth Row: Barbara McKaig Edwards, Robert P. Boyce. Seventh Row: Martha Ulm Hill, Jean Hornbeck Boyce. Eighth Row: Bobby Singleton, Howard L. Johnson, I. J. Bates. Not Pictured: Doug Casteel.*



## Class of '71

*First Row: Doris Wilson Stewart. Second Row: Lonnie Charles Jones, Franklin C. Curtis, Larry Cox. Third Row: Barbara Scoggins Curtis. Fourth Row: Ronald Morgan, Judy Hollandsworth Pope, Linda Ann Holbrook Browning. Fifth Row: Joanne Ramey Morgan, Janice Maddox Harris, Joyce Cunningham Begley, Debby Armstrong Emerson. Sixth Row: Jana Brown, Karn Eirich Gwilliams, Kathy Ratliff Miller. Seventh Row: Harry Johnston, Belinda Pugh, Betty West Piercy. Eighth Row: Leonard Marr, Grayson Saine, Mary Ann Daniel Singleton. Ninth Row: Rich Collins, Larry Delph, Stephen S. Kiteck. Tenth Row: Robert Harris, Parke Carter, Carlton Monk, Danny Partin, Wayne Byrd. Eleventh Row: Johnny Carter Browning, Harry Wood. Twelfth Row: Ralph Tackett.*



## Foundation

*First Row: Mary Rose Huff McMurray, Rose Mary Danner, Bobby Asher. Second Row: Joel McMurray, Betty Messer Parks, Quinna E. Frazier Hall. Third Row: Robert Barry Bingham, Malvin Bailey, Paul D. Atkinson.*



## Class of '76

*First Row: Travis Hicks, Braxton Hicks, Nelson Hicks, Jocelyn Hicks. Second Row: Ruth McConnell, Teresa Reed Thacker, Lelia Johnson Rash, Andrea Thomas Hardymon, Barbara Workman, Shirley Conley Frederick, Lorene Napier, Libby Austin. Third Row: Brenda Abney Bullock, Shanda Smith Aiken, Paul D. Atkinson, Tim Jordan, Betty Lou McCreary Alspaugh, Mark Boes, James Hicks, Michael L. Davis.*



## Dana I Aggies

*First Row: Robert (Pinky) King, Jerry J. Cox, Bill White, Grayson Saine, Paul Maymon, Eddie Kennedy, Rod Bussey, Roger Wade, Leonard W. Marr, Ron Hawes. Second Row: Ron Singleton, Forest L. Greenwalt, D. Jack Tate, Andy Piercy, Glenn Edwards, Bruce Martin, Curtis Deel, Rick Collins, Paul E. Lewis, Danny C. Hill, Stephen Kiteck, Wayne Ryan. Third Row: Joe Dwight Elswick, Jack W. Bragg, Danny R. Bush, Wayne Byrd, Harry Wood, Carlton Monk, Lonnie Jones, Roger Leggett, Dennis Grant, Chester Cole. Fourth Row: Jim Martin, Ken Gilbert, Alvin Arnold, Tommy Reynolds, Bob Singleton, Monty Chappell, Robert L. Martin, Gerry Atkinson, Kenneth Sapp, Todd Repass, Gleason Arnett, Phil Haney, Ron Atkinson.*

*Photos courtesy of Berea College Public Relations*



# About Berea People

Since the new Alumni directories are available, the *Berea Almanus* is no longer printing alums' address changes in the Class Notes section, effective Fall 2001. If you would like to find a fellow alum or former professor, please consult the new directory, contact the Berea College Alumni Association at 1.800.457.9846 or e-mail director Jackie Collier Ballinger, at jackie\_ballinger@berea.edu or secretary Renee Deaton at renee\_deaton@berea.edu. For information on purchasing a directory, please contact the Alumni Association.

## 1932

**Olive Sturgill Walker**, A28, Ck'30, retired from teaching in 1972 and moved to a retirement center in Green Valley, Ariz. She enjoys golfing, hiking, and volunteer work.

## 1936

**Ross E. and Dorothy Stone Chasteen**, '37 were presented with the Interfaith Literacy Board Member Appreciation Award by the Literacy Board of Pineville, Ky. for their loyalty and "faithful dedication to the literacy program of Bell County" at an appreciation luncheon on May 3, 2001. The Chasteens lived in many places around the U.S., including Kentucky, Mississippi, and Florida, and retired to Pineville more than twenty years ago, where they immediately began volunteering for the Literacy program, teaching individual students as well as teaching classes for other tutors. Ross was also awarded a George H. Hixon Fellowship in the Kiwanis Club.



Dorothy & Ross Chasteen

## 1937

The Class of 1937 will celebrate its 65<sup>th</sup> reunion during Summer Reunion 2002, scheduled for June 7-9. **James "Pop" Hollandsworth** is the reunion chairperson. **Margaret Brannan Judy** is at Arbor Acres United Methodist Community in Winston-Salem, NC, where she is involved in numerous activities including the Shepherd's Choir and the Sharps and Hats, which is a rhythm band with piano accompaniment, along with singing.

## 1938

**Isaac Mitchell**, retired from Concord College, was a 2000 inductee into the Smoot High School Alumni Hall of Fame. He retains his ranch of cattle and pasture land in Lewisburg, WVa., which he visits on nearly a daily basis, is



Isaac Mitchell

active in the Lions Club and church functions, and is an avid card player.

## 1939

**Ruby Rasmake Richardson**, retired teacher in Cleveland, Va., enjoys looking after her four grandchildren.



Ruby Richardson with her grandchildren.

**Marion White** is in sales with MONYLife Insurance Company in Largo, Fla.

## 1940

**Jack Stevens** and his wife, Marian, have been married for 57 years. He spent 27 years working as a chemist for the federal government. After his retirement, a Washington consulting firm called him to help research the Chemical Weapons Convention, an international treaty that had already been signed by 160 nations and was set to go before the senate for ratification. Mr. Stevens has been active with Severna Park (Md.) High School's band boosters, as a family selection consultant for foreign exchange students, and as a substitute teacher.

## 1941

**James T. "Jim" Prewitt** exhibited his prize-winning whittling at the Henry County (Ky.) Library in June. A retired county extension agent for Henry County, he began woodcarving as a youth, and improved his skills while wintering in Florida after retirement. His wife, **Eileen McDaniel Prewitt**, is a retired librarian. They live in New Castle, Ky.

**Joe Sumner** and his wife, Jean, of Cincinnati, Ch., observed their 55<sup>th</sup> wedding anniversary on Feb. 24.

## 1942

The Class of 1942 will celebrate its 60<sup>th</sup> reunion during Summer Reunion 2002, scheduled for June 7-9. **Ruth Cornett Fierros** is the reunion chairperson.

## 1943

**Virginia Ferrill Piland** presented a quilt to Berea Hospital, entitled "Our Berea Heritage." The quilt, in memory of Berea Hospital Auxiliary Past President and volunteer, Carl Eschbach, was 97 inches by 36 inches and took 25 months of designing and work to complete. It depicts the settlement and development of Berea from before 1900 to the present.

## 1944

**Dr. Thomas Hubbard Jr.** was honored by St. Barnabas Presbyterian Church in Richardson, Texas, having served 33 years as volunteer treasurer. **Pearle Scott Hubbard**, '43, was presented a 45-year pin for her service to Girl Scouts at the annual appreciation luncheon. She also received the "Thanks Badge," the highest honor given to adults by the Girl Scouts of Tejas Council, in Dallas, Texas.

## 1945

**Helen Monier Engel's**, Ck'45, husband, Clem, died. She lives in Cleveland, Oh.

## 1946

**Jimmie Ruth Burton Parris** and her husband, Alton, of Rainbow City, Ala., stay active and have been married for 53 years.



Jimmie Ruth and Alton Parris

## 1947

The Class of 1947 will celebrate its 55<sup>th</sup> reunion during Summer Reunion 2002, scheduled for June 7-9. The reunion chairperson is **Juanita Noland Coldiron**. **Bette Joe Gevedon Whetstone**, A47, and her husband, Delbert, observed their 50<sup>th</sup> wedding anniversary on Dec. 1, 2000 in Farmville, North Carolina with 25 guests present. They have moved to Greenville, North Carolina, with this move being their 26<sup>th</sup>.

## 1948

**Jeanne Hardy Griffin** and her husband, Murray, observed their 50<sup>th</sup> wedding anniversary on April 14. Their children honored them with a reception at the Uica Christian Church in their hometown of Uica, Miss., and on April 22, sent them on a two-day trip to Hot Springs, Ariz.

## 1949

**Amanda Clark Snider** traveled in September from Seattle through the Canadian Rockies to Vancouver Island. She lives in Granada Hills, Calif.



Amanda Clark Snider with her grandchildren.

## 1950

**Eleanor Louke Colabufio's** husband, Charles, died April 17. She lives in Tampa, Fla. **Joline "Jo" Vickers Nakamura** was honored by the Ashland (Ky.) Senior Center with "Jo Nakamura Day" at the Center on May 21, 2001, for her 27 years of volunteer service cooking monthly special meals. She was also named a "Hometown MP" by the Ashland Daily Independent newspaper. She also cooks for her church, including fellowship dinners, meals after funerals, and other events, and is the head church librarian. She and her husband Mitsuto, who she met while she was his sister's roommate at Berea, live in Hatwoods, Ky.

**Dr. Robert Wesley** is a dentist in Lexington, Ky.

## 1951

**Cleo Wilson Brown**, retired district coordinator with Sherwin-Williams, is a member of the Blue Star Line Dancing Group in Garland, Tex. The group was honored by the office of the mayor of Garland on March 21, 2000, and presented with a proclamation for favorably representing Garland locally and statewide, having won many gold medals at the Senior Olympics in Dallas and Temple, Texas, as well as for folk dancing. In one year, the group performed for more than 50 nursing and retirement homes, school and church functions, as well as for other places and groups.



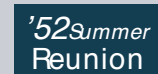
Cleo Wilson Brown

**Rev. Floyd Finch Jr.**, who is a retired Episcopal priest, and **Leona Sutherland Finch**, Ck '53, who is retired from the real estate business, are living in a retirement community in Charleston, South Carolina.

**Edith Morgan Litto**, of Saratoga, Fla., visited the Spanish Riviera in January and also saw Berea friends, **Betty Redmond Roberts** of Palm City, Fl; **Dual**, '53, and **Mary Ann Ledbetter Mobley** of Conyers Ga., and **Janet Webb Sparks** of Oak Ridge, Tenn.

## 1952

The Class of 1952 will celebrate its 50<sup>th</sup> reunion during Summer Reunion 2002, scheduled for June 7-9. The reunion chairpersons are **Bill and Rose Moore Ramsay**.



**Eugene Dekich**, Cx'52, of Birmingham, Ala., finished second place in the HealthSouth Pro-Am at the 10<sup>th</sup> Anniversary Bruno's Memorial Classic golf benefit tournament on April 25, 2001.

**Bill Ramsay** is president of the board at Pine Mountain Settlement School. **Rose Moore Ramsay**, Cx'52, schedules performances for Kentucky folk singer and youngest daughter, Jennifer Rose. They both accompanied Ms. Rose and her husband in February on a singing tour in Florida. They are involved with fourteen churches in their community of Edisto Island, S.C., representing a variety of traditions working together in unity.

Bill and Rose Moore Ramsay

## 1953

**Wiley DuVall** retired from the North Carolina Agriculture Extension Service in 1991, after serving as an agent in Madison County (NC) for 26 years. He is now retired a second time as a real estate broker. **Elisabeth Hale DuVall**, '55, retired in March 1999 from serving as public health nurse with the Madison County (NC) Health Department for 26 years. They live in Marshall, NC.

**Dr. Billy Friar** retired from the mechanical engineering faculty of Wright State University after 30 years of service. Prior to that he taught at Virginia Tech and Ohio State. He is a registered professional engineer in Ohio and continues to be active in several professional and honor societies. He lives in Fairborn, Oh.



Dr. Billy Friar

## 1954

**Delores "Dickie" Mitchell Grubbs** has a full-time art career, after years of serving as a mother and corporate wife. She has a studio, agent, and does one person art shows. She and her husband, **Basil A. Grubbs**, live in Jacksonville, Fla., and spend time traveling throughout the world.

**William Napier** of Chavies, Ky., spends a lot of his time in church activities, fishing, gardening and visiting his two sons.

**Jessie Reasor Zander** received the Tucson Human Relations Commission Certificate of Honor on Jan. 24, from the city of Tucson, Az. She also received the Servant Leader Award from St. Mark's Church on Oct. 15, 2000, for her leadership in the church and the Tucson community.

## 1955

**Dean**, Cx'55, and **Nina Crabtree Cornett**, '61, retired to Cooper Landing, Alaska a few years ago to a home near a river with a great salmon run. They spend the summers fishing, hiking, and volunteering for environmental causes, and spend their winters in eastern Kentucky.

## 1957

The Class of 1957 will celebrate its 45<sup>th</sup> reunion during Summer Reunion 2002, scheduled for June 7-9. The reunion chair is **Harold Blackburn**.

**Silas**, Cx'57, and **Eula Ison Gilliam**, '56, are both retired school teachers in Wise, Va.

**Dr. Jack Banton**, a long time vice chancellor, has been named the acting senior vice president for administration at the University of Kentucky in Lexington, Ky.

**Dr. J. Gordon** and **Sue Troutman**



Dr. J. Gordon Henry

**Henry**, '59, conducted prayer seminars recently in Germany, France, and Romania. Over the past few years, they have worked in 41 nations and 45 states. He is a retired executive director for Transnational Association of Christian Colleges and

Schools after an 11-year tenure. She is retired from the Middle Tennessee Medical Center in Murfreesboro, Tenn., where they continue to live.

## 1958

**Juanita Rice Hodgett** is a retired teacher and library assistant in Charlotte, Mch.

**Dr. James Colvard** was honored by the Naval Surface Warfare Center in Dahlgren, Va., with an award for leadership established in his name. The award is presented annually to recognize professionals who have exhibited outstanding leadership during their career at the center. Dr. Colvard served as technical director for the center from 1973 to 1980. He lives in King George, Va.

## 1960

**John Greene**, of San Jose, Calif., retired from Lockheed Martin after 34 years of service.

**Dr. Nathan Greene**, an immunologist, and **Lynn Easter Greene**, Cx'61, real estate agent, are both retired in Bullard, Tex.

**H. Randolph Kidd Jr.** is a retired pastor with the Methodist Church in Barboursville, WV.

## 1961

**Dr. Paul Percy**, dean of the College of Engineering at the University of Wisconsin (Madison), was elected to the national Academy of Engineering. Prior to his present position, he was president of SEMI/SEMATECH, that steered technical issues for more than 150 of the nation's top suppliers to the semiconductor industry, and was director of microelectronics and photonics at Sandia National Laboratories.

## 1962

The Class of 1962 will celebrate its 40<sup>th</sup> reunion during Summer Reunion 2002, scheduled for June 7-9. The reunion chairperson is **Jack Barrier**.

**Vince Ross**, who died Jan. 24, 2001, was instrumental in developing the walking trails at Hunter Park. Since his death, the path has been named the Vince Ross Walking Trail, and the township chose Mr. Ross' birthday, May 18, as a dedication date. The Vince Ross Memorial Scholarship Fund has also been established at



Vince Ross

Springboro High School. The scholarship will be awarded annually to a deserving senior to remember and honor Mr. Ross' dedication and service to school and community, concern for others, loyalty, and work ethic.

**Carolyn McDermitt Williams** is a substitute teacher with the Kanawha (WVa.) County Schools.

## 1964

**Pat Powell Greathouse** has opened a bed and breakfast, the Great House Inn, on Jackson Street in Berea.

**Jack Roush**, race-car builder and engineering-firm owner, has thoroughly reworked the Stage 3 Mustang. The car, which has a Ford 4.6-liter V8 engine, can outrun the Camaro and the Corvette Z06. This past spring, the first of some 750 Roush Mustangs found their way into about 200 Ford dealerships.

## 1966

**Dr. Larry Hair**, professor of chemistry at Berea College, had a photography exhibition at Berea College's Hutchins Library from April 9 to May 15 entitled "Women Figureheads from the Citty Sark."

**John Fleming**, formerly the director and chief operating officer at the National Underground Railroad Freedom Center, was appointed the Cincinnati Museum Center's vice president of museums. He will oversee education, public programming, collections, and research.

**Breck Robbins**, of Cleveland, Ch., has retired after playing ball for 25 years. He played for Medina Body Shop, on the National Championship Class A softball team of 1992.

**Russ Sword** is CEO at the Ashley County



Russ and Erma Foster Sword

## 1967

The Class of 1967 will celebrate its 35<sup>th</sup> reunion during Summer Reunion 2002, scheduled for June 7-9. The reunion chairs are **Judy Coates Fray** and **Rick Ginter**.

**William Chappell** has retired from the Division for Air Quality with the Kentucky state government and moved to Berea.

## 1968

**Jimmy C. Guffey** was named director of Kentucky Baptist Homes for Children's (KBHC) Southern Region Campus in Bronston, Ky. in June. KBHC provides care for children who have been abused, neglected, or whose families are in crisis. The Southern Region Campus is home to KBHC Bronston Center, a residential treatment facility which cares for up to 20 girls, and the

Wilderness Camping Treatment program, which serves up to 40 boys. Guffey worked for 24 years at the Lake Cumberland Boys Camp, a juvenile treatment facility, including six years as superintendent.

**It. Col. Clyde Huskey** has retired from the Tennessee Air National Guard with a total of 30 years of military service. He is employed part-time by the University of Tennessee in Knoxville.



Dr. Donna Dean, '69, a biochemist, was named acting director of the new National Institute of

Biomedical Imaging and Bioengineering by the National Institutes of Health. The institute will support fundamental research into using engineering and imaging science in the study of biological processes and disease, and in applying this information to medical care.

## 1970

**Jean Rockwell Cooper** completed training to be a lactation consultant (LC) with the International Board of Lactation Consultant Examiners in October 2000. She is the LC at East Ohio Regional Hospital and has started a lactation program there that includes outreach and education to the WLC offices of three rural Appalachian Ohio counties. She and her husband, Fred, operate a small education farm near Barnesville, Ohio, making sorghum and farming with oxen.

**Dorothy Logan Wilson** retired from Texas Instruments in Dallas, Tex., after more than 21 years of service.

## 1971

**Lynda Turner-Tindall** was recognized as one of the outstanding teachers in Kentucky, who helped set the standards for the Kentucky Core Content tests. She is an instructor at Frederick Fraize High School in Cloverport, Ky.

**Birth:** A daughter, Sophia Marie Gravel, born May 1, to **Mise Watson**, Cx'71, and his wife, Nancy Gravel. They live near Nashville, Tenn.

## 1972

The Class of 1972 will celebrate its 30<sup>th</sup> reunion during Summer Reunion 2002, scheduled for June 7-9. The reunion chairperson is **Janie Adams Frazier**.

**Ron Daley** is campus director of the Knott County Branch of Hazard Community College in Hindman, Ky.

## 1973

**Dr. John Grigsby** is an attorney with the Appalachian Research and Defense Fund. **Janice Yeary Grigsby**, '75, is a nurse practitioner with Women's Care Group. They live in Maryville, Tenn.

**Married:** **Doris Smithson** to Douglas Temple on May 21, 2000 at Bowles Chapel in



The Berea College Alumni Association invites you to join us this summer for a Vancouver-Alaskan cruise on a Holland America cruise ship. Departure is July 11, 2002, and the cost is only \$1,699 for a full week on the beautiful Alaskan coast, plus air add-on of \$300 and port charges of \$270 per person. Travelers who purchase outside cabins get two extra nights FREE in Vancouver. For more information, please contact Alumni Association director Jackie Collier Ballinger at 1.800.457.9846, or by e-mail at jackie\_ballinger@berea.edu.

WITH YOUR FELLOW ALUMS!

Memorial Southwest Hospital in Houston, Texas. Alumni in attendance included **Pam Eakin Deck**, '75, and **Michael Roop**, '72. Mrs. Temple is a registered nurse at Northeast Medical Center Hospital in Humble, Texas.

## 1974

**Alan Barger** is a prevention consultant and research analyst for the Prevention Research Institute in Lexington, Ky.

**Danny Parker**, Cx'74, is a certified public accountant in Richmond, Ky.

## 1975

**Patricia Darnell Sutton**, Cx'75, is employed by St. Joseph Hospital in Lexington, Ky.

**Larry K. Woods** was named superintendent of Breathitt County (Ky.) Schools in June. For the past four years, he has served as instructional supervisor at Garrard County Schools, and has served as principal at schools in Garrard and Lincoln counties. He has received multiple honors as a principal, teacher, and coach. Woods is working on his doctorate in educational administration at the University of Kentucky. His wife, **Sharon L. (Kinsler) Woods**, is a registered nurse (R.N.)

## 1976

**Michael** and **Vicky Seals Davis**, '74, traded in their suburban life for a 126 acre farm near Lexington, Ky.

## 1977

The Class of 1977 will celebrate its 25th reunion during Summer Reunion 2002, scheduled for June 7-9. The reunion chairperson is **Jewrette "J.J." Johnson**.

## 1978

**Mike Gaudill** was named superintendent of Madison County (Ky.) Schools. **Lisa Pennington Gaudill** teaches at Madison Southern High School.

**Jonathon** and **Karen Greene Hurley** observed their 25<sup>th</sup> wedding anniversary on Aug. 14. She teaches music at four elementary schools in Harrison County (Ky.), serves as the church pianist at Cynthiana Baptist Church, and is a part-time music instructor for Maysville Community College. Mr. Hurley is employed by Toyota Motor Manufacturing in Georgetown, Ky.

**Rebecca Blankenship Liles**, Cx'78, of Wheelersburg, Ch., is now Rebecca Blankenship Silvey.

## 1979

**Birth:** A daughter, Adeline Violet Grace Hahn, born May 23, to Rai Hahn and **Gindy Artist** of Ft. Shaw, Mont.

**Married:** **Susan Martin** and Stephen Baisden on July 22, 2000. She is a licensed psychologist in private practice in Williamson, WVa

## 1980

**Leonard Lauriault** is a forage agronomist at New Mexico State University's Agricultural Science Center. He is married to **Donna Browning Lauriault**, '81.

## 1981

The Class of 1981 will celebrate its 20<sup>th</sup>

reunion during Homecoming 2001, scheduled for Nov. 16-18. **Susie Hillard Bullock** is the reunion chair. She can be reached at 4081 Palomar Blvd., Lexington, Ky. 40513 or via e-mail at sbullock@mail.transyedu.

'81 Homecoming

**Donna Warren-Agee** is an oncology nurse in the Markey Cancer Center at the University of Kentucky.

## 1982

**Bryn Gabriel** has been appointed as middle school principal at the Carol Morgan School in Santo Domingo, Dominican Republic.

**Ron** and **Liz Mullins Robinette** both graduated on July 21, with master's degrees in Communications and Information Sciences from Ball State University's Center for Communication and Information Sciences.

## 1983

**Birth:** A daughter, Rachel Alexandra, born Oct. 17, 2000 to Chuck and **Sarah Wallace Stump** of Hurricane, WVa.

**Beth McKenzie Adams** received her master's degree in curriculum and instruction from Lindsey Wilson College. With a 3.9 grade point average, she also received the Education Award. She teaches at Adair County High School, and is married to **Guy William Adams**, '81.

**Dwayne Dover**, Cx'84, was promoted to Lieutenant Colonel and is stationed at Ramstein Air Base in Germany.

**Rev. Jeffrey McDowell**, an ordained pastor in the North Central New York Conference of the United Methodist Church, is in his fifth year at Centenary United Methodist Church in Bath, New York.

## 1985

**Birth:** A daughter, Brynne Elizabeth, born Oct. 9, to **Eddie Galloway** and his wife, Angela of Lancaster, Ky.

**Kimberly Taylor Goodlett** is a teacher and has relocated closer to her family in West Chester, Oh.

**Married:** **Vicki Hays** to Brad Gould of New York, NY

**Fook Weng Ng** is employed at Seagate, an American tape drive manufacturer, in Penang, Malaysia.

**John Paris** has been named president of Western Kentucky Gas Co. He began his career with WKGas an operations aide in 1985, and has held a variety of positions in operations, marketing and engineering in the natural gas industry, most recently with Greeley Gas Co. in Colorado. He and his wife, **Delynn Roark Paris**, and their three children live in Owensboro.

## 1986

The Class of 1986 will celebrate its 15<sup>th</sup> reunion during Homecoming 2001, scheduled for Nov. 16-18. **Donna Baker**

'86 Homecoming

Ky. 40744-7996.

**Birth:** Ason, Owen Christopher, born Aug. 3, 2000 to **Dwain Arnold** and his wife, Michele of Kingsport, Tenn.

**Sandra Hayden Collins** is a student support manager at Carl D. Perkins Job Corps Center in Paintsville, Ky.

**Dr. Willie Parker** completed a one-year training in preventive medicine at the University of California, San Francisco, which makes him eligible for a second board certification in the specialty of preventive medicine. He is chief of maternal and child health programs and policy for the California Department of Health Services in Sacramento, Calif.

**Birth:** Ason, Jason Levi, born Sept. 15, 2000 to **Chris**, Cx'89, and **Gloria Wise Miller** of Abingdon, Va.

## 1988

**David Peeler**, of Fayetteville, NC, was selected for the Comptroller Meritorious Performance Award, a prestigious award from the American Society of Military Comptrollers.

**Melanie Quisenberry**, a human resources specialist, is pursuing her master's degree in personnel at Kentucky State University.

## 1989

**Married:** **Veronica Ellis** and Terry Stephens. Mrs. Stephens is program manager for East Tennessee Human Resource Agency's Child Care Food and Summer Food Program. She was presented the Sunshine Award for outreach and promotion of summer food programs in the southeast region.

**Leonidas Kassapidis** is a director, writer, designer and performer for theatre and television. He is also a teacher, scientist, and part time windsurfer. He lives in Berea.

**Deborah Cantrell Schaffer**, Cx'89, and her husband, Brian, are overseas missionaries. They recently served in the Dominican Republic and Costa Rica. They are now working with different ethnic congregations in Houston, Texas for the Church of the Nazarene.

**Naomi Ruth Sutton Shores**, a stay-at-home mom, volunteers at the Randolph County (Indiana) YMCA with a local MOPS group where she serves as a discussion leader. She does cottage industry sewing for Rivars. She and her husband, Todd, are both involved in their church.

## 1990

**Birth:** Ason, Brice Colby, born May 12, to **Willie** and **Janet Brown Hill**. Mr. Hill is the loan portfolio manager/officer with the Professional Sports Division of Firststar Bank. Mrs. Hill is the assistant director of admissions at Seven Hills School in Cincinnati, Oh.

**Birth:** A daughter, Amber Michelle, born Aug. 15, 2000 to William and **Beatrice Speakman Lee** of Rio Rancho, NM

**Married:** **Robbie Murphy** and Beth Davis on April 28, in Berea College's Danforth Chapel. Alumni in attendance included: **Chris**, '91, and **Marla Collins Bryant**, '91; **Kevin Minor**, '93, and **Linda Johnson Barber**, '95; **Robert**, '93, and **Jennifer Robinette Duff**, '94; and **Helena Jacobs Mink**, '51.

**Sherry Galloway Ray** completed her master of science in nursing degree at the

Please use this form to let us know what's new, for address changes, or to let us know if you are receiving duplicate copies of the *Berea Alumnus*.

Name (please include maiden name) \_\_\_\_\_

Year of Graduation \_\_\_\_\_

Address \_\_\_\_\_

City, State, ZIP \_\_\_\_\_

Class Note: \_\_\_\_\_

\_\_\_\_\_

\_\_\_\_\_

Please send to: Shelley Boone Rhodus, Class Notes Editor, Berea College Alumni Association, CPO 2203, Berea, Ky. 40404. You can call us: 1.800.457.9846 or e-mail: alumnus@berea.edu

University of Tennessee at Chattanooga on May 6. She is a family nurse practitioner. She and her husband, Terrell, observed their 10<sup>th</sup> wedding anniversary in June. They reside in Ringgold, Ga.

## 1991

**The Class of 1991 will celebrate its 10<sup>th</sup> reunion during Homecoming 2001, scheduled for Nov. 16-18. Sara Zook Wilson is the reunion chair. She can be reached at 8835 Fountainview Drive Apt. 512, Indianapolis, Ind. 46226.**

**Donna Spradlin Conner's** name has changed to Donna Spradlin Steele.

**Michael Hunt**, of Jasonville, Ind., started "OneOnOne Ministries," where he travels around the country doing concerts containing a combination of vocal and instrumental music, comical and dramatic sketches, puppetry, comical "magic," and other entertainment. In April, he and his fiancée, Carol Krierim, participated in a mission trip to Romania and assisted with physically handicapped individuals through physical therapy education and evangelism.

**Greg Lakes**, Cx'91, who lives in Berea, was elected for a two year term as president of the Kentucky Funeral Directors Association's Central District. He will coordinate continuing education opportunities, meetings, and events for other funeral directors across several counties from over 100 funeral homes. He is married to **Rachel Roberts**, '92.

**Birth:** Ason, Jackson Lee, born Jan. 30 to Sean and **Michelle Bevins Lemmon** of Big Hill, Ky. Mrs. Lemmon is a homemaker.

**Choua-Yeng "Christopher" Lo**, became an entrepreneur and opened an insurance and real estate brokerage firm on Jan. 1, 2000, after five years of management with US West. He and his family live in Stockton, Calif.



Choua-Yeng (Christopher) Lo and family

**Married:** **Donita Wheat** and Michael Meador on Oct. 17, 1998. Alumni in attendance included: **Connie Branham Estep**, '90; **Steve Estep**, '90; **Ariff Quli**; **Kay Wells Cunningham**, '88; **Robert Cunningham**, '89; and **Alan Collins**, '97. Mrs. Meador is department manager of the Electronic Pre-Press/Desktop Department at Publisher's Printing Company in Louisville, Ky.

## 1992

**Dawn Swallow Ballard** is the assistant track coach for Montgomery County (Ky.) High School. She started marathoning a couple of years ago and qualified to compete in the Boston Marathon on April 16.

**Debby Davidson Pacholewski**, who taught high school agriculture for six years in Harlan, Kentucky, has moved to Lee County (Va.) where she is teaching eighth grade agriculture.

**Jennifer Rose**, a performing artist and singer, was artist-in-residence at Felter 4-H camp in London, Ky. this summer. She has released six compact discs, and performed throughout the U.S. and overseas, including Japan, Italy, Austria and Denmark, where she tours annually. She has appeared at the National Cathedral in Washington, D.C., Musikfest in Pennsylvania, and the Krannert Center at the University of Illinois.

**Married:** **Kelly Runyon** and Shawn Mylar on Nov. 25, 2000, at Steele Memorial United Methodist Church. Mrs. Mylar is director of finance with Autism Services Center in Huntington, Va.

**Dee Lindemann Verdecchia** is a registered nurse at the University of Kentucky Children's Hospital. **Carlos Verdecchia**, '91, is a science teacher at Bryan Station High School.

## 1993

**Birth:** Ason, Noah James, born Oct. 20, 2000 to **Ralph**, '96, and **Linda Bayes Clark**. Mrs. Bayes is a stay-at-home mom. Mr. Bayes is activities and admissions coordinator for Oakdale Christian High School in Jackson, Ky., and serves as the director of "Spoudazo," a character-building program for teens.

**Dennis Sargent** is the branch manager of Community Trust Bank in Berea, Kentucky.

**Birth:** Ason, Andrew John, born April 4, 2000, to Christopher and **Amanda Byrd Schreiner** of Berea. Mrs. Schreiner is a homemaker.

**Russell Schweighardt**, Cx'93, is a respiratory therapist at Holdaway Medical Services. **Sonya Samuel Schweighardt**, Cx'93, is a homemaker. The couple has been home-schooling their children for two years. They live in Goshen, Ky.

**Birth:** Ason, William Brayden, born March 28, to **Billy Sims** and his wife, Melissa. Both Mr. and Mrs. Sims are teachers at Kings Mountain Elementary School in Lincoln County (Ky.)

**Terria Wright**, Cx'93, is a teacher in the Birmingham, Ala. City Schools. She is pursuing a master's degree and "A" level certification in collaborative teaching, "A" level certification in educational leadership, and expertise in literacy at the University of Alabama at Birmingham.

## 1994

**Felicia Cheek** participated in President Bush's bill-signing ceremony which repealed the Death Tax, representing the Printing Industries of America (PIA), where she has served as government affairs manager since January 2000. Lobbying for the PIA she was instrumental in arguing for the tax's repeal. Anative of London, Ky., Cheek has served on the staffs of U.S. Representative Ed Whitfield and U.S. Senator Mitch McConnell, both of Kentucky.

**Gregory Brian Dye MD**, has joined the Downtown Clinic in Harlan, Ky. as a family practitioner. The Clinic is associated with the ARH Medical Association/Daniel Boone Clinic and Harlan ARH Hospital. He received his medical degree from the University of Kentucky in 1998, and recently completed his family practice residency at the Quillen College of Medicine at East Tennessee State University. His wife, **Carla Ward Dye**, is currently working on her master's degree in education at ETSU.

**Jodie Leidecker** is a lecturer in general studies at Berea College.

## Married: Matt Montgomery and Nicole



Matt and Nicole Masica Montgomery

**Masica**, '98, on Nov. 18, 2000 at Liberty Avenue Baptist Church in Berea. Alumni in the wedding included **Heather White Garland**, '98, **Tria Kinnard**, '98, **Marty Wheatley**, '98, **Fred Barton**, **Ron Nance**, '93, and **Richard Masica II**, '99. The couple resides in Lexington, Ky.

## 1995

**Birth:** A daughter, Erin Elizabeth Faith, born Jan. 19, to Michael and **Jennifer Keith Wilson**. Mrs. Wilson is a practical nursing instructor at Somerset Technical College.



Michael and Jennifer Keith Wilson and daughter.

## 1996

**The Class of 1996 will celebrate its 5<sup>th</sup> reunion during Homecoming 2001, scheduled for Nov. 16-18.**

**Michael Green is the reunion chair. He can be reached at 1605 56<sup>th</sup> St. Wylam, Birmingham, Ala. 35224.**

**Married:** **Vicky Lynn Adkins** and Brian Yocum on July 21, at the Richmond Church of Christ in Richmond, Ky. She is a primary teacher at Berea Community School.

**David Cole** was awarded a North Carolina Local Government Fellowship with the public administration program at the University of North Carolina at Chapel Hill. He is employed in the engineering department of the city of Asheville, North Carolina.

**Birth:** A daughter, Vivian Jolie Mae, born in December 2000 to **Nelson** and **Darla Hardwick Flam**, '94. Mr. Flam graduated from the University of Kentucky College of Medicine in May and is now a pediatric resident physician in Georgia. Mrs. Flam is working on a themed wildcat for the Wildcat Madness Art Show to benefit the University of Kentucky Basketball Museum.

**Janel Bowling Grider** is pursuing her master's degree and teaching kindergarten in Somerset, Ky.

**Married:** **Selina Stambaugh** and Jeff Bryant on Aug. 7, 1999 in Ironton, Ohio. **Tina Napper Wiseman** served as matron of honor. Other Bereans in attendance were **Greg Wiseman**, and **Jason and Ruth Kegley Gregg**, '95.

**Birth:** A daughter, Ashley Elizabeth, born March 17, to **Haze**, Cx'98, and **Shonda Miller Wahlert**. Mrs. Wahlert is in human resources and Mr. Wahlert is a sound engineer. They live in Lexington, Ky.

## 1997

**Jill Faith Camlin Neal**, Cx'97, who attended Berea in 1996 and 1997, has written a book of fiction whose action takes place on and around the Berea campus. The book captures friendships, independence, career aspirations and doubts, and sex. She self-published the book, *65 Miles*, through Dorrance Publishing, Pittsburgh, Penn. Anyone interested in a book can call Dorrance Publishing at 1.800.788.7654.

**Married:** **Cynthia Smith** and David Ludwig on May 12. Mrs. Ludwig graduated from law school on May 12, at the Appalachian School of Law in Grundy, Virginia. They live in Seattle, Wash.

## 1998

**Shayne Harrison** is manager of product applications and ingredient marketing with the U.S. Dairy Export Council, an association of dairy producers and suppliers who wish to export abroad. In the past year he has traveled to Mexico, Canada, Korea, China, Japan, Brazil, Egypt, and Lebanon. He is also pursuing his master's in international business.

**Nathan Hartman** is assistant registrar of Thomas More College in Grestview Hills, Kentucky. **Holly Hartman** is consulting coordinator for Rockwell Laser Industries in Cincinnati, Ohio.

**Brian Jump** is a computer systems analyst for Ashland, Inc. in Lexington, Ky.

**Jeanette Mofield** received her master's degree in social work with a specialization in family and marriage therapy from the Kent School of Social Work at the University of Louisville in May 2001.

**Jacqueline Jackson Smith** received her master's degree in Dairy Science, physiology, from the University of Wisconsin at Madison in May. She is now pursuing her Ph.D. in endocrinology-reproductive physiology there under the direction of Dr. Lewis G. Sheffield.

**Birth:** Ason, Gunnar Cade, born June 30, in San Antonio, Tex. to **Ben** and **Heidi Gilmore Stewart**.

**Birth:** A daughter, Taylor Madison, born March 26, to **Tirina Unrue Thomas** and her husband.

**Byron Walters** is a software engineer for Systems and Computer Technology. He is involved in the Madison County (Ky.) Rescue Squad and the Whitehall Volunteer Fire Department.

**Theresa Sanders Walters** is account manager with Systems and Computer Technology.

**Birth:** Ason, Cooper, born April 7, to **Joseph** and **Laurie Hewitt White**, '03. Mr. White teaches at Berea Community School and Mrs. White is a current student at Berea College.

## 1999

**Ronda Morgan Angel** teaches 6<sup>th</sup> and 7<sup>th</sup> grade math at Jackson County (Ky.) Middle School.

**Tammy Clemens** is pursuing her interest in women's studies and feminist theology, focusing on world religions and ecofeminist ethics.

**Married:** **Kimberly Fraley** and Willard Murray on Nov. 11. Alumni in the wedding included: **Louis Burkwhat**, '95, **Anne Kinton**, '97, **Jason**, '97, and **Amy Diehl Hicks**, '97, **Joel Miller**, '97, and **Tim Lawson**, '94. They live in Boiling Springs, SC.

**Birth:** Ason, Adam Colton, born April 14, to **Anthony** and **Shanda Sperry Larson**, Cx'99, of Martinsburg, WVa.

**Luke Payne** is a music cataloging assistant at the University of North Carolina at Chapel Hill.

**Sara Weinbergs** is working with a Teen Center in Avalon, Calif., running the study center and Campus Life, the high school youth group.

## 2000

**Nelson Alexander** is employed at Caritas Peace Center, a mental health facility in Louisville, Ky.

**Any Clifford** is pursuing her master's degree to be a nurse practitioner at the University of Kentucky.

**Iori Combs** is a social worker in Lee County (Ky).

**Birth:** A daughter, Kaitlyn Nicole, born May 5, to Bobby and **Laurel Jennings Epps**, Cx'00 of Berea.

**Don Hodges** is a case manager with the Child Care Council of Kentucky for the Child Care Assistance Program. He is also youth leader at Berea Church of God.

**Birth:** A daughter, Sylvia Dortha, born Oct. 11, to **Micha** and **Tina Nelson Johnson**, Cx'97, of Franklin, Ky.

**Jessica Napier** was honored as the Outstanding Major of the year in Physical Education by the National Association for Sport and Physical Education in Cincinnati, Ohio on March 29. The award recognizes outstanding students majoring in all of the disciplines related to physical education or sports from colleges and universities throughout the country, with only one student in each sport or physical education-related degree program from each institution recognized each year. She is in graduate school at Morehead State University in Morehead, Ky.

**Married:** **Adam Phipps** and **Della Creighton** on April 7. He is a customer engineer and she is a librarian in Berea.

**Married:** **Amber Reece** and **Stuart Ian Moran** on Jan. 26, in Chichester, England. Mrs. Moran is a registered nurse at Barham Manor in Eastergate, England. Mr. Moran attends Chichester University.

**Gara Broadus Sizemore** is a substitute teacher in the Child Development Lab at Berea College.

**Akili Ujima** is an assistant in the Education Studies Department at Berea College.

## 2001

The Class of 2001 will celebrate its 1<sup>st</sup> reunion during Homecoming 2001, scheduled for Nov. 16-18. **Ann Kessinger** is the reunion chair. She can be reached at 210 Mason St., South Point, Ohio 45680.

To honor Bereans who have passed away, and help former classmates identify them more easily, the *Berea Almanus* lists them in this "Passages" section. If you know of a Berean who has died, please let the Alumni Association know by using the form on page 34, calling 1.800.457.9846 or e-mailing [alumnus@berea.edu](mailto:alumnus@berea.edu). Please include the person's class year or connection to Berea, and the date and place of death.

## 1920s

**Harold Richardson Sr.**, Cx'24, of Richmond, Ky., died April 26. He was a former teacher, farmer, and served as general merchandising chief administration officer in the ammunition division at the Lexington Blue Grass Army Depot for 32 years. He was a member of the First Baptist Church, the Madison County Fair and Horse Show Board, and the Richmond Masonic Lodge No. 25F. He is survived by a son, Harold, two daughters, Betty Zane Athausser and Norma Gebel; three grandchildren; two brothers; one sister; and six great-grandchildren.

**Delora Wren Davis**, N'28, of Berea, died May 29. A former teacher, she was active in her church, including teaching Sunday school and being a member of the Women's Missionary Society, prior to being disabled.

**Kelse Risner**, Cx'29, of Tucson, Ariz., died Oct. 20, 2000.

## 1930s

**Iena Howard**, Cx'30, of Manchester, Ky., died Jan. 31.

**Stella Jean Denny Gibson**, '31, of Lexington, Ky., died May 2. She had served as a teacher and school lunch director for Knox County (Ky.) schools and as a Kentucky district supervisor, working with County Judge John Sherman Cooper. She was a member of PEO, Homemakers, and the Broadway Christian Church. She is survived by a son, Douglas; and a daughter, Sue Rudy; five grandchildren; two sisters; and several nieces.

**Gara Hudson Abney**, Cx'32, of Berea, died May 14. She was retired from Berea National Bank, and a member of Berea Baptist Church, where she was a part of the Dixie Lee Sunday School class. She is survived by a son, Ed; a daughter, Betty Burnell; two sisters; four grandchildren; and six great-grandchildren.

**Pryse Haddix**, '36, of Albany, Ky., died Nov. 7, 2000. He was a former math teacher, farmer, and owner of Haddix Electrical appliance store.

**Forrest Whitehouse**, Cx'38, of Mercer Island, Wash., died in May 2000.

**Jack Jones**, '38, of Ashland, Ky., died Jan. 18, 2001.

**Gadyce Combs Langdon**, '39, of Oak Ridge, Tenn., is deceased.

## 1940s

**William Gray**, '40, of Westland, Mich., died April 6. He was retired from Ford Motor Co. He was a World War II veteran, and a member of the First United Methodist Church at Garden City as well as the Masonic Lodge at Stone, Ky. He is survived by his wife, Irene; a son Robert; and three daughters, Susan Burton, Sandy Hook and Patricia Santer; a sister; and six grandchildren.

**Ed Turner**, '42, of Tucson, Ariz., died March 11. A teacher and Indian Agent with the Bureau of the Interior, he worked primarily with the Papago and Pima Indian tribes of Arizona. He was preceded in death by his wife, **Elizabeth Deaton Turner**. He is survived by two daughters,

**Treva Turner**, '61, and Paula Herfkens; and a son, Don Turner.

**Ernestine Mitchell**, '43, of Lewisburg, W.Va., died March 17. A retired school teacher, she was a member of the First Baptist Church. She is survived by her brother, **Isaac Mitchell**, '38.

**Jeannette Peters Nowlin**, '43, of Waynesburg, Penn., is deceased.

**Robert Vowles**, V12'45, of St. George, Utah, is deceased.

**Minnie Sue Hill Koon**, Cx'47, of Rutherfordton, NC, died April 1. She is survived by her husband, James, and sons James, Larry, and Martin.

**Dorothy Medich**, '47, of South Bend, Ind., died Dec. 24.

**Mary Ellen Parker-Bauer**, '47, of Cincinnati, Ohio, died Nov. 18, 2000. A retired teacher, she volunteered at the Cincinnati Zoo and tutored elementary school students in reading. She is survived by her husband, Joseph.

## 1950s

**Boone Caldwell**, A'50, of Berea, died May 11. Retired from the Berea College Bakery, he was a World War II Army veteran, and a member of the First Christian Church. He is survived by one son, Tommy; one brother, Nick; one sister, Dallis Causie; two granddaughters, four grandchildren and one niece.

**Donald Hall**, A'51, Cx'55, of Hopkinsville, Ky., died on a photographic safari in Africa during the Labor Day weekend. He was retired from the United States Air Force. After retirement, he managed several military reunion groups and continued to be involved with experimental air craft as a civilian consultant. He is survived by his wife, **Margaret Planck Hall**, '54.

**Alberta Miller Lanham**, '51, of Lexington, Ky., died March 9. She was a former home economics teacher and Kenton County Schools food service director, and a member of St. Luke United Methodist Church. Survivors include a daughter, Vicki Lanham; and a sister, Edna Gregory.

**Alfred Swanson**, '51, of Wilmington, Del., died in November, 2000. He was a geologist, and vice-president and construction superintendent for Worthy Brothers Pipeline Corp. Inc.

**Sara Neal Hettinger**, Cx'55, of Stevenson Ranch, Calif., died March 17.

**Mary Garrett Ogle**, Cx'56, of St. Albans, W.Va., died April 1. She was a former teacher. She was preceded in death by her husband, **Milton Ogle**, and is survived by two children, Tommy and Angela, and four grandchildren.

**Jerry Halstead**, Fd'58, of Berea, died July 8. A retired Berea College Utilities employee, he is survived by his wife, **Mary Goodrich Halstead**, Cx'48, a son, Terry; and two grandchildren.

**Samuel Hawkins**, '59, of Bedford, Mass., died Jan. 23. A retired meteorologist with the U.S. Air Force, he was involved in Boy Scouts, the Masons, and his church. He is survived by his wife, **Martha Moore Hawkins**, '60.

## 1960s

**Maureen Sexton Gormas**, '63, died March 5. She had retired in June 1997 after teaching in Prince Georges County, Maryland for 30 years. She is survived by her husband, Francis; three children, Pamela, David, and William; and one grandchild.

## COLLEGE OFFICERS

R. Elton White, '65, Chairman of the Board  
Dr. Larry D. Shinn, President  
Dr. David B. Porter, Academic Vice President and Provost  
Dr. John S. Bolin, Dean of the Faculty  
Gail Wolford, Vice President for Labor and Student Life and Dean of Labor  
Jeffrey G. Eisenbarth, Vice President for Business and Administration  
Dr. William A. Laramée, Vice President for Alumni and College Relations  
Dr. Ronald E. Smith, Vice President for Finance

## COLLEGE TRUSTEES

R. Elton White, '65, Sarasota, Fla.  
Chairman of the Board  
Dr. Larry D. Shinn, Berea, Ky.  
President of the College  
Dr. John A. Auxier, '51, Knoxville, Tenn.  
James T. Bartlett, Cleveland, Ohio  
Barry Bingham Jr., Glenview, Ky.  
Vance E. Blade, '82, Louisville, Ky.  
Ann Jones Bowling, Darien, Conn.  
Jerry J. Cox, '65, M. Vernon, Ky.  
Martin A. Coyle, Kiawah Island, S.C.  
M. Elizabeth Culbreth, '64, Arlington, Va.  
Frederic L. Dupree Jr., Navy V12 '45, Lexington, Ky.  
Catherine G. Ebert, Glen Arm, Md.  
Eugene V. Fife, Charlottesville, Va.  
Genn R. Fuhrman, New York, N.Y.  
James P. Gray II, Lexington, Ky.  
William R. Gruver, Eagles Mere, Pa.  
Donna S. Hall, Lexington, Ky.  
Marian L. Heard, Boston, Mass.  
Geneva Bolton Johnson, Brookfield, Wis.  
Jewrette Y. Johnson, '77, Birmingham, Ala.  
Dr. William H. Johnstone, '74, Bristol, Tenn.  
Lucinda Rawlings Laird, Louisville, Ky.  
Dr. Eugene Y. Lowe, Jr., Evanston, Ill.  
Dr. Alice R. Manicur, '54, Frostburg, Md.  
Dr. Elissa May-Plattner, Camp Springs, Ky.  
Dr. Harold L. Moses, '58, Nashville, Tenn.  
James E. Nevels, Swarthmore, Penn.  
Thomas H. Oliver, Dataw Island, S.C.  
Dr. Charles Ward Seabury II, Calabasas, Calif.  
Dr. David E. Shelton, '69, Wilkesboro, NC  
David Swanson, Walpole, Me.  
David O. Welch, '55, Ashland, Ky.

## HONORARY TRUSTEES

Alberta Wood Allen, Glenview, Ky.  
Jack W. Buchanan, '46, Winchester, Ky.  
Wilma Dykeman, Newport, Tenn.  
Dr. Roland E. Goode, '46, Rapidan, Va.  
Kate Ireland, Tallahassee, Fla.  
Dr. Juanita Morris Keps, '42, Durham, NC  
Kroger Pettengill, Cincinnati, Ohio  
Alfred J. Stokely, Zionsville, Ind.

# 2001 A HOMECOMING ODYSSEY



1981

1986

1991

1996

2001

## SHELTON IS DISTINGUISHED ALUMNUS



Dr. David Shelton

Dr. David Eugene Shelton, '69, will receive the Distinguished Alumnus Award at the Homecoming banquet. In addition to his work as a senior vice president at Lowe's Companies, David serves on Berea's Board of Trustees.



Dr. Willie Parker

Dr. Willie James Parker, '86, chief of maternal and child health services with the California Department of Health Services, will receive the Outstanding Young Alumnus Award. Dr. Don Hudson, '65, Berea professor of technology and industrial arts, will be receiving the Rodney C. Bussey Award of Special Merit. Mr. and Mrs. Charles W. (Annette) Tinnin, longtime friends of Berea, will be made honorary alums.

## ARE YOU CELEBRATING A REUNION AT HOMECOMING 2001?

Berea is celebrating your reunion! The classes of 1981-2001 will celebrate reunions November 16-18 at Homecoming. All former cheerleaders will also be having a reunion, with the most complete squad present winning a prize. Your reunion chairperson is listed under your class year in the Class Notes section of *The Berea Alumnus*.

As a way of celebrating, why not make a gift in honor of your reunion year? This is one more way of continuing Berea's legacy and making it a reality for students of today and tomorrow.

For information on making gifts, contact Lou Lakes, Director of Planned Giving, at 1.800.457.9846, 1.859.985.3002 or lou\_lakes@berea.edu; or Jackie Collier Ballinger, '80, Director of Alumni Relations, at 1.800.457.9846, 1.859.985.3104 or jackie\_ballinger@berea.edu.

## HOMECOMING 2001 REGISTRATION FORM

Name (include birth name) \_\_\_\_\_ Class Year \_\_\_\_\_

Spouse/Guest (include birth name) \_\_\_\_\_ Class Year \_\_\_\_\_

Address \_\_\_\_\_ State \_\_\_\_\_ Zip \_\_\_\_\_

Home Phone \_\_\_\_\_ Business Phone \_\_\_\_\_ FAX Number \_\_\_\_\_

\_\_\_\_\_ Yes, I plan to be at Homecoming, November 16-18, 2001. Please reserve tickets for me for the following events:

I will need \_\_\_\_\_ tickets for the Friday evening, November 16, banquet at Boone Tavern at \$15.00 each.

I will need \_\_\_\_\_ tickets for the Class Pizza Buffet Luncheon on November 17 for the class of '81, '86, '91, '96, '01, or others (please circle one). Tickets are \$6.50 per adult, \$3.00 for children ages 5 and under.

I will need \_\_\_\_\_ tickets for the Basketball Game on Saturday evening, November 17. (\$6.50 each)

Please indicate if you require special accessibility or assistance during Homecoming or special dietary needs you may have.

\_\_\_\_\_ No, I am unable to attend Homecoming 2001. Enclosed is some information which can be shared with the reunion group.

Enclosed is my check for \$\_\_\_\_\_ - \$\_\_\_\_\_ of this is my contribution to the Alumni Fund and \$\_\_\_\_\_ is for my tickets **OR** Please charge my VISA, MASTERCARD, DISCOVER, AMERICAN EXPRESS, OR DINERS CLUB card for \$\_\_\_\_\_. \$\_\_\_\_\_ of this is my contribution to the Alumni Fund and \$\_\_\_\_\_ is for my tickets.

CARD \_\_\_\_\_ CARD Number \_\_\_\_\_ Expiration Date \_\_\_\_\_

Signature of Card holder \_\_\_\_\_

***Due to availability of tickets, reservations must be made by November 2, 2001.***

Mail reservation form to: Berea College Alumni Association, CPO 2203, Berea, KY 40404  
FAX to 859.985.3178, or call 1.800.457.9846.



## WAR'S DEMANDS

Excerpts from an address by President Francis S. Hutchins to the Students of Berea College December 12, 1941



Francis S. Hutchins

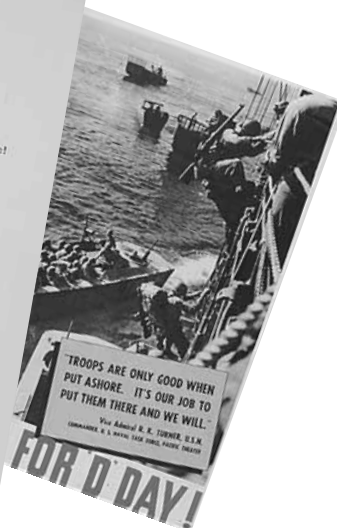
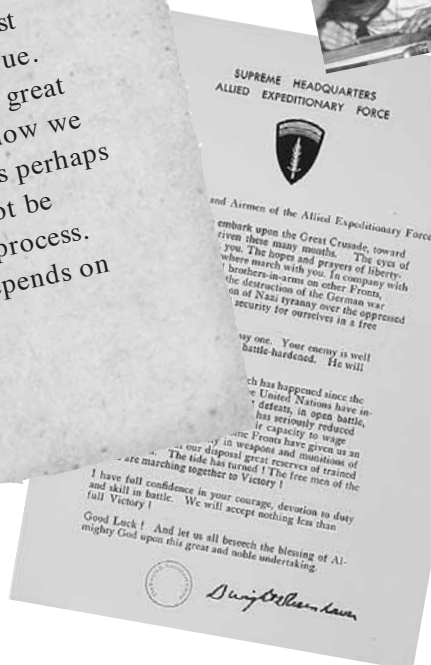
As far as the work of Berea College is concerned, I believe the present emergency demands that we do our work very much better. The college is an educational institution. We can serve our country in time of emergency as in time of peace, by doing our work well. I believe in an emergency we should do it better. I do not believe Berea College can serve by lowering standards, or by deviation from our accepted program. If it has been considered essential in time of peace for individual and social welfare, I believe it is still essential in time of war.

... It is essential for our country, for our society, that people have education so that they may understand the problems of the world in which we live, so that they may devise ways and means of meeting these problems which are better than our present ways and means.

What we have accomplished will be important; what we leave undone will be a detriment. The completion of your courses is more important to you and to the service which you may render to your country, than rushing off, dropping the responsibilities which you have accepted.

... What I am going to keep in mind, and what I believe each of us must keep in mind, trying desperately to do so if necessary, is that there is a world ahead; we are going to be in it. I mentioned the paradox last June—we are fighting for peace. I believe it is true. Whether or not we get the peace will depend a great deal on how we strive and how we plan, and how we think. That is why an educational institution is perhaps different than some other institution. It cannot be turned on and turned off. It is a continuous process. Your contribution in the future, I believe, depends on how you meet the present emergency.

As the 60th anniversary of the United States' entry into WW II approaches on December 7, 2001, it is important to look back at Berea during wartime. President Francis Hutchins' speech is a convincing argument for the importance of education for the future of the country, and an appeal to students, faculty and staff to weigh their actions and reactions carefully. It is as pertinent today as we respond to the events of September 11, 2001.



# BEREA COLLEGE STUDENT CRAFTS

*Presents Our New*

## Crafts COLLECTION ♦ 2002 ♦



*The Gallery Basket*



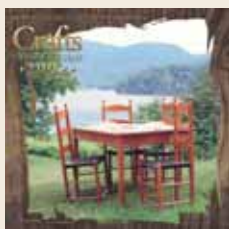
*The Harmony Basket*



*The Carrier Basket*

 *Annual Holiday Sale*   
*Saturday November 17, 2001*  
*9 a.m.-6 p.m.*

*Russel Acton Folk Center • Jefferson St. • Berea, Ky.*



New Catalogue  
1-800-347-3892

Visit our web site  
[www.bereacollegecrafts.com](http://www.bereacollegecrafts.com)

## THE BEREAL ALUMNUS

Periodical postage paid at Berea, Ky. and additional mailing offices. Send address changes to The Berea Alumnus, c/o Berea College Alumni Association, College Post Office Box 2203, Berea, KY 40404

# Welcome Berea's sesquicentennial class!

*The class of 2005, who will graduate as Berea College celebrates its sesquicentennial anniversary, arrived on campus August 24-26.*

